



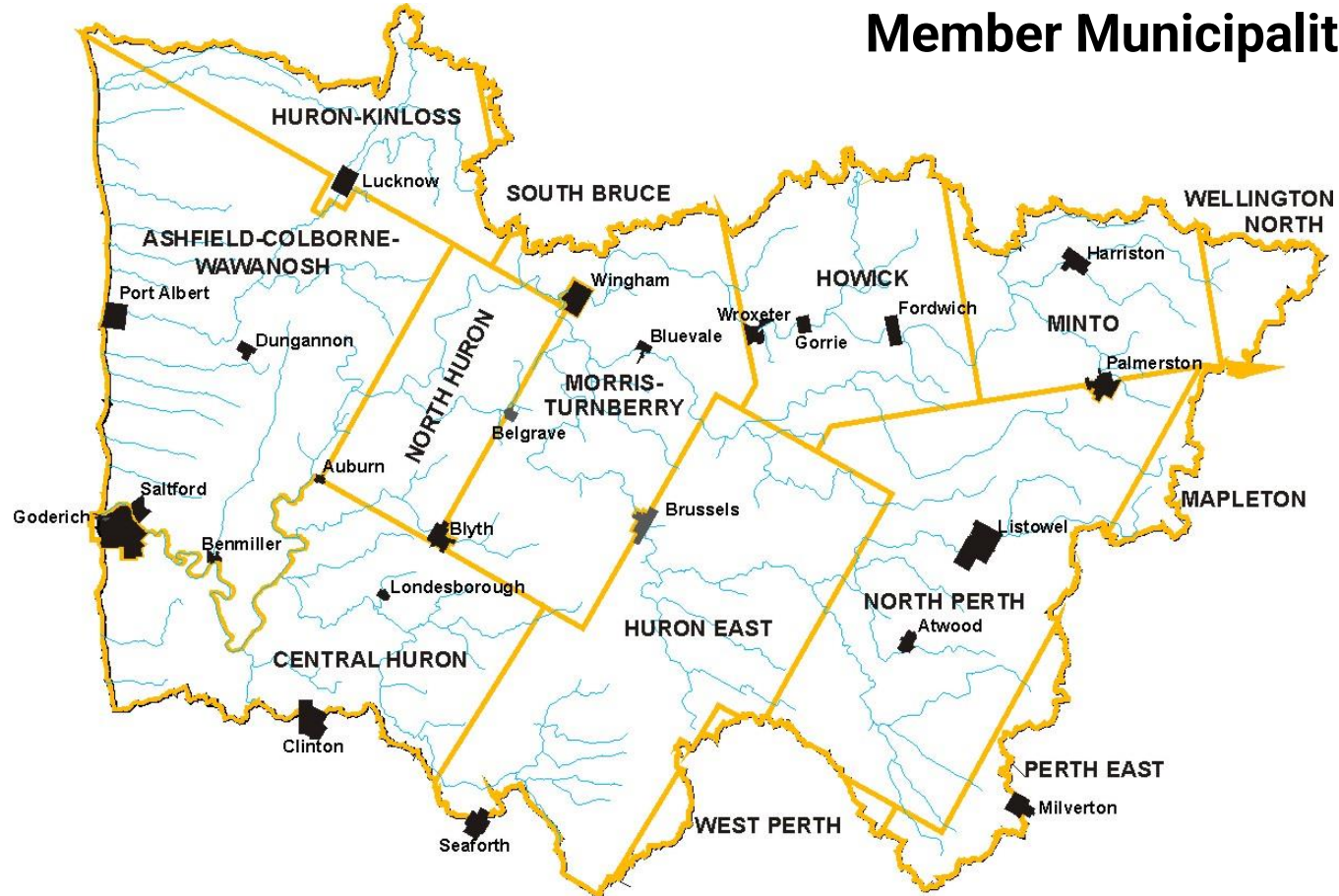
Maitland Conservation
Working for a healthy environment.




- 2021 Highlights
- Priorities for 2022
- Budget and Levy
- CA Regulatory Changes



Member Municipalities

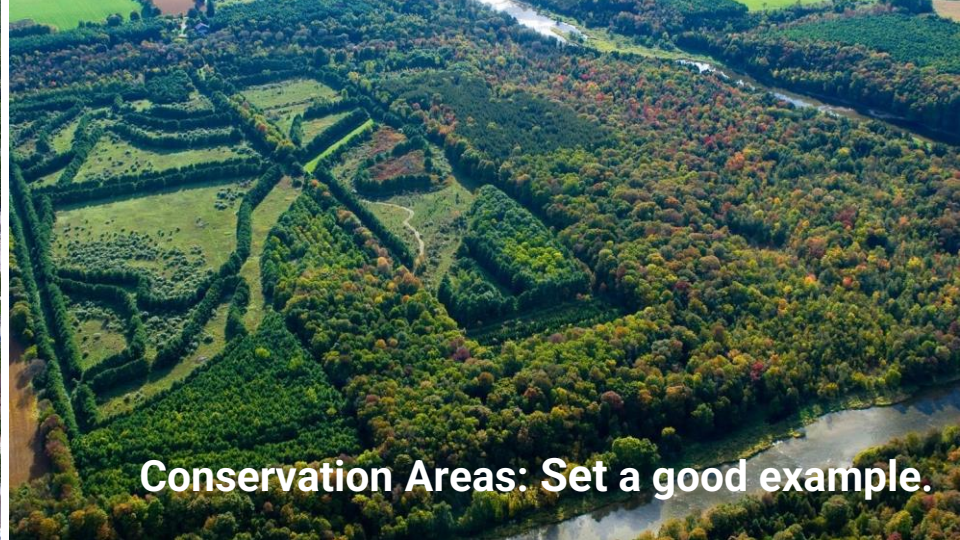




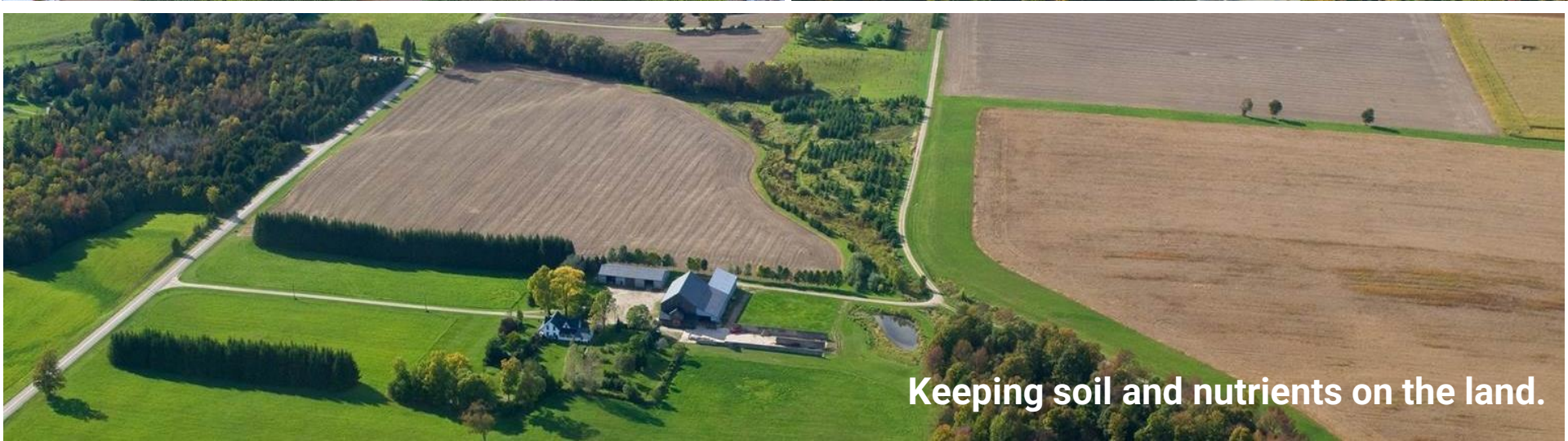
**Providing leadership
to protect and
enhance water,
forests and soil.**



Reducing the risk for property damage.



Conservation Areas: Set a good example.



Keeping soil and nutrients on the land.

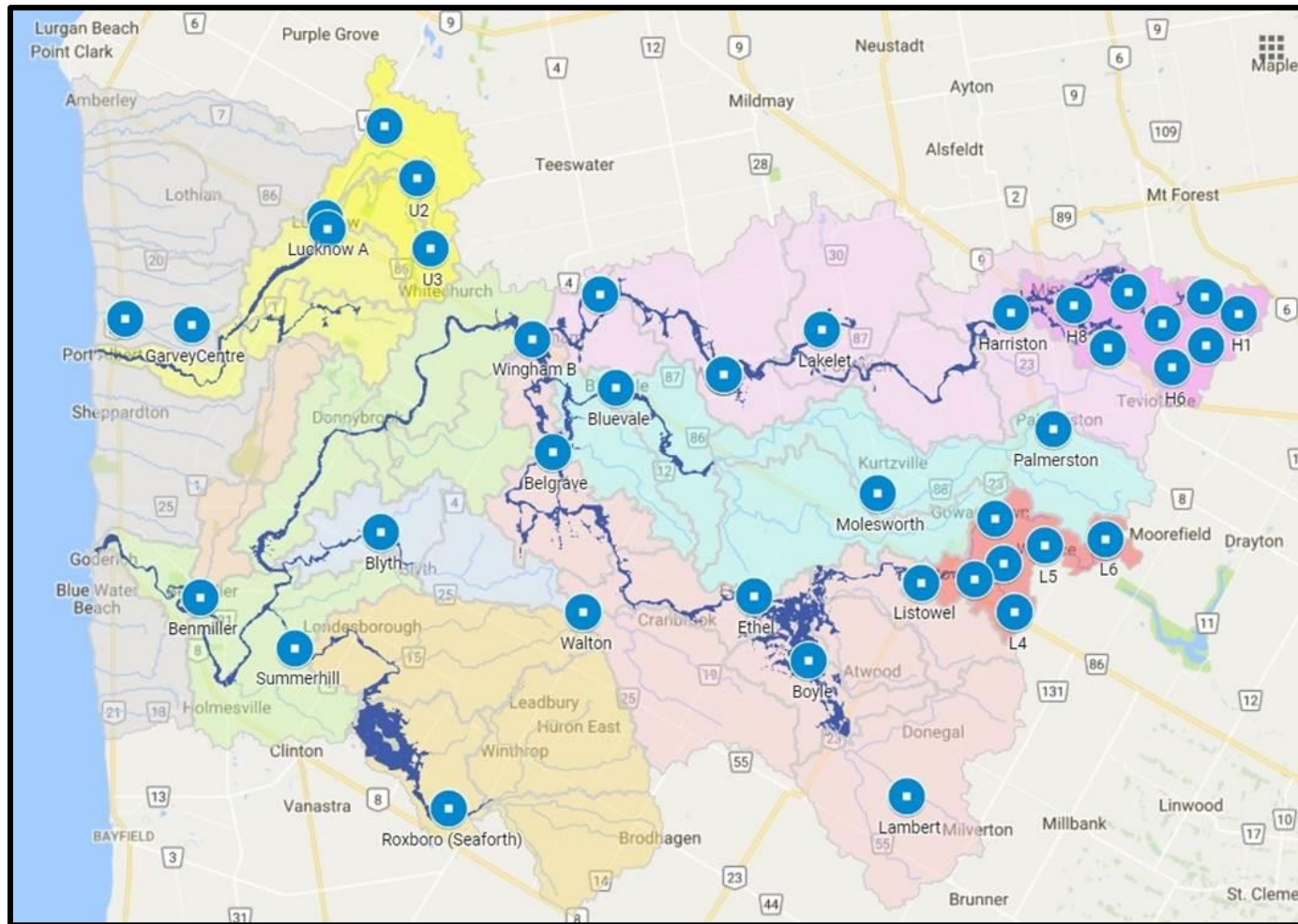


Flooding & Erosion Safety Services

Shoreline Hazard
Mapping Update
Project
2022 - 2025



Harriston Special Policy Review



Flood Forecasting Network



Radio
Repeater
Installed





Restoring the North Maitland River



Forest Health Assessment

Watershed Stewardship Services

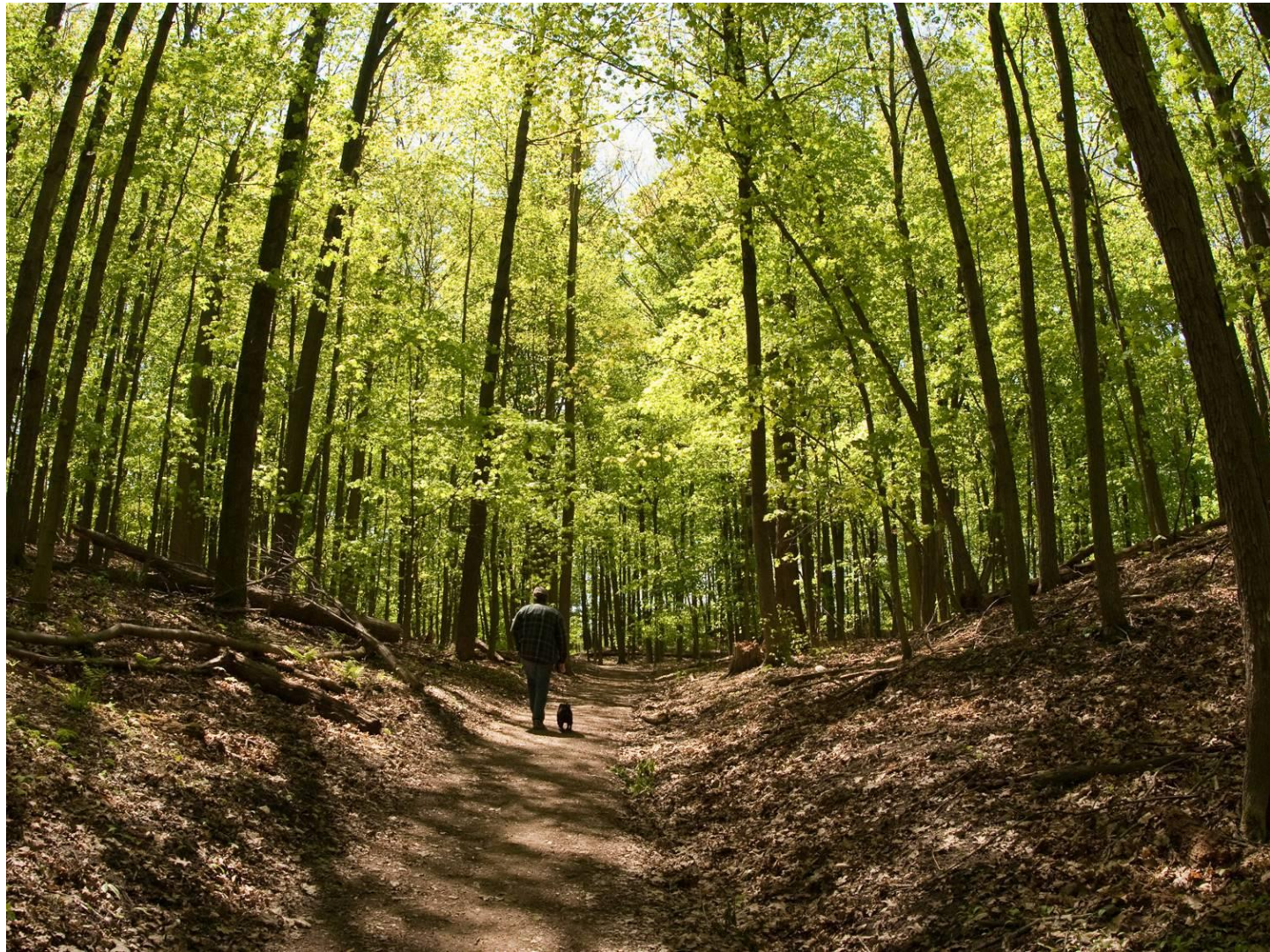


Wellington Rural
Water Quality
Program



Conservation Areas

Increased
Conservation Area
use throughout
2021









2022 Budget and Levy

- Stable base for core services
- Maintain critical infrastructure and equipment

2022 Draft Budget:

\$5,057,479



2022 Draft Levy

	2021 Approved Levy	2022 Draft Levy	Change
Town of Minto	\$111,084	\$121,012	\$9,928



Regulatory Changes

Mandatory Services

- Natural Hazards, Conservation Areas,
- Drinking Water Source Protection
- Non Mandatory: Stewardship Extension Services

- **Transition Plan submitted– Dec. 31, 2021**
- **Inventory of Services and Programs – Feb. 28, 2022**
- **Municipal Agreements – January 1, 2024**