

**TOWN OF MINTO****DATE:** July 27, 2016**REPORT TO:** Mayor and Council**FROM:** Bill White C.A.O. Clerk, Brian Hansen Public Works Director,  
Mike McIsaac Roads & Drainage Foreman**SUBJECT:** 2016 International Plowing Match and Rural Expo  
Temporary No Parking, No Stopping, Road Closure

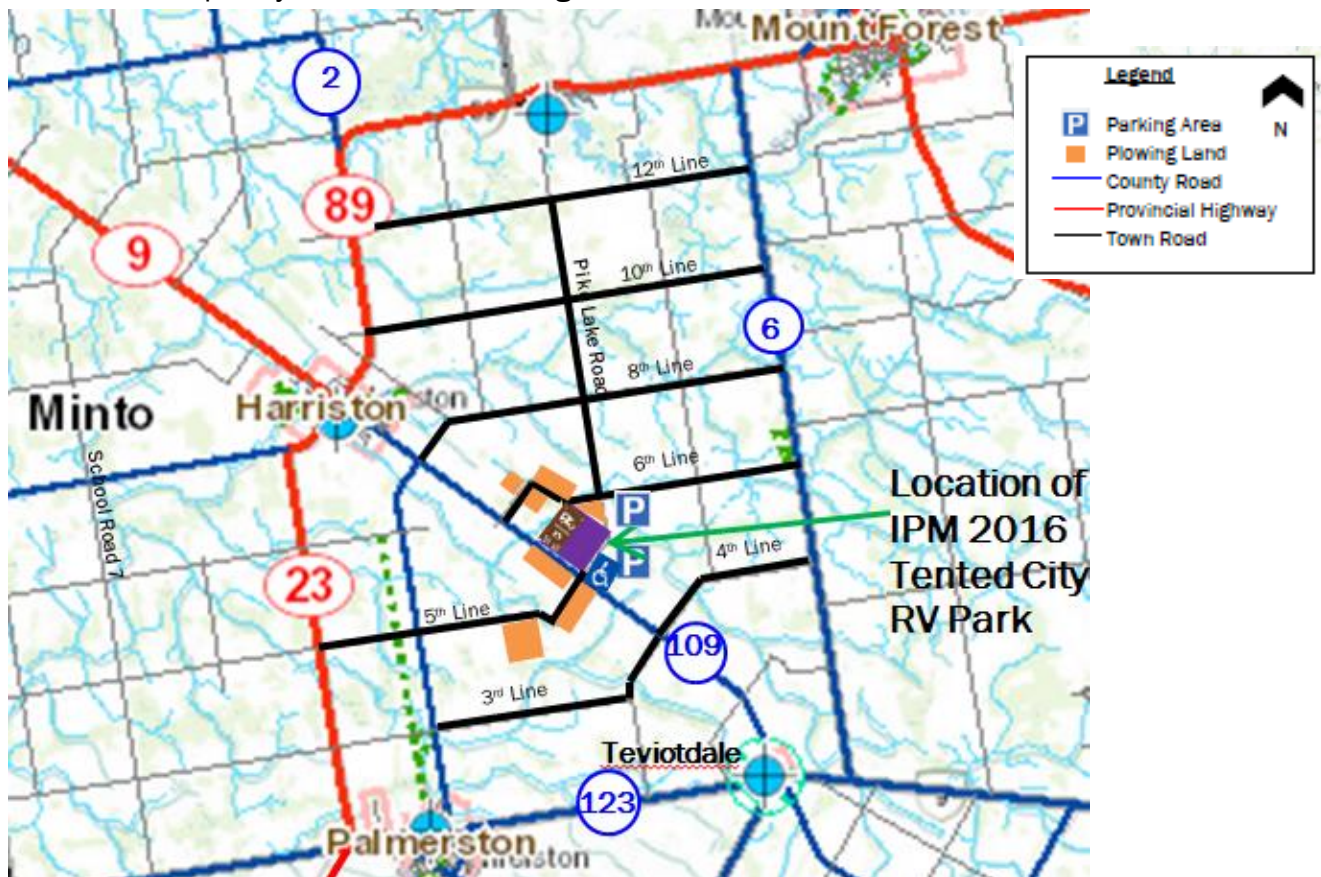
---

**STRATEGIC PLAN:**

8.4 Facilitate private business or non-profit groups bringing small, medium and large sized events to Town facilities and spaces that attract visitors, develop local talent and culture, fundraise for local groups and enhance local business.

**BACKGROUND**

IPM 2016 is at the Schneider farm at the corner of Gillespie Lane and County Road 109. The map below shows the site location, key properties and public roads in the area. This report looks at temporary traffic control during IPM.



Public Works attended IPM Parking and Traffic Committee meetings and were very helpful developing a traffic plan in conjunction with the County. The County approved the following traffic measures:

1. Speed reduction to 50 km/h on CR 109 6<sup>th</sup> Line to south of Gillespie Lane
2. No parking or stopping on CR 109 6<sup>th</sup> Line to south of Gillespie Lane
3. Temporary traffic lights Gillespie Lane/CR 109 and 6<sup>th</sup> Line/CR 109 intersections.
4. Construction of 1km right turn lane from Gillespie lane south on 109

At the temporary traffic lights OPP officers will direct traffic at peak periods.

The Town's part of the traffic plan involves the following temporary traffic measures:

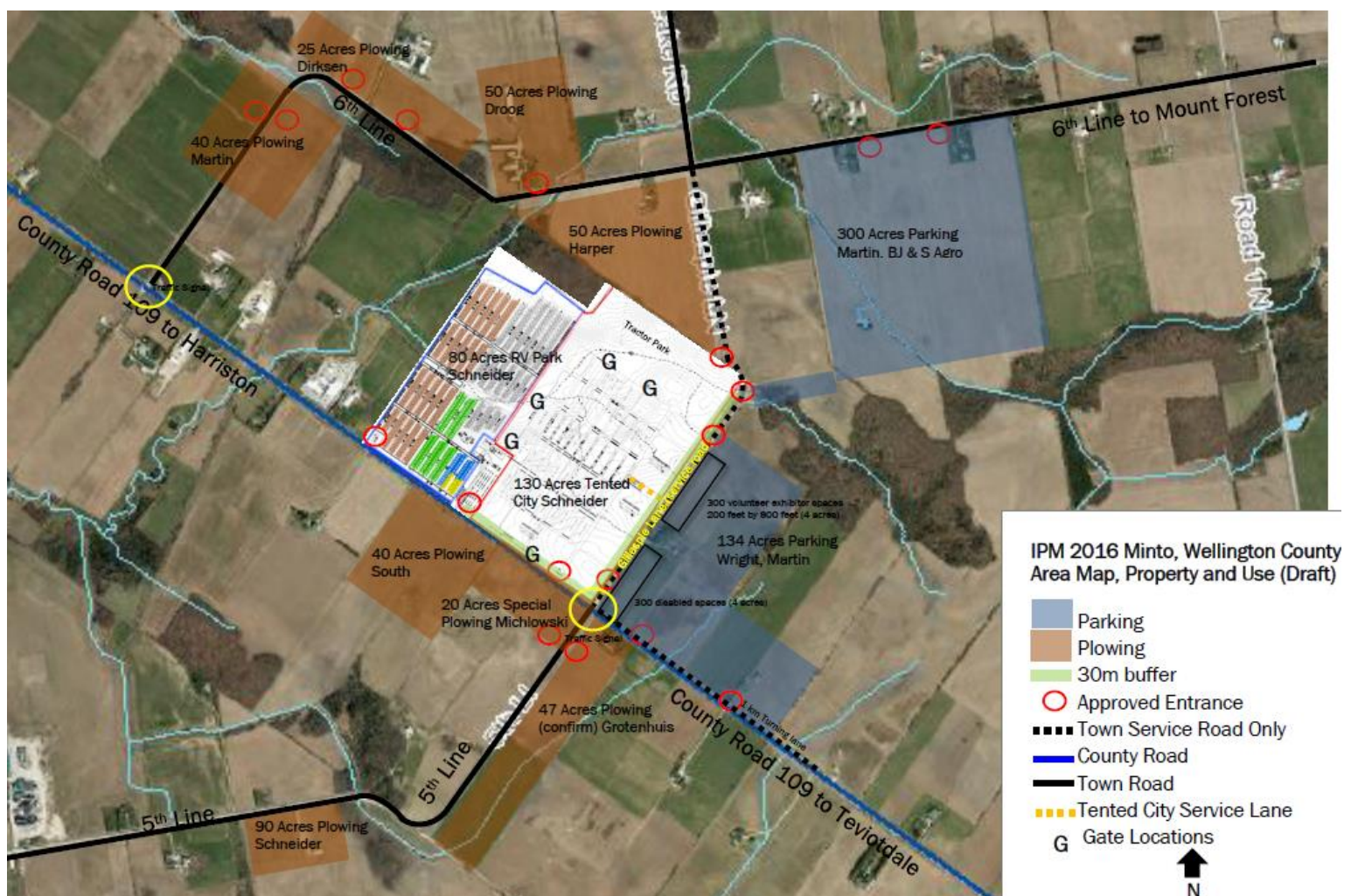
1. Close Gillespie Land CR 109 to the 6<sup>th</sup> Line; restrict to IPM service vehicles, tractors
2. Speed reduction to 50 km/hour 6<sup>th</sup> Line from CR 109 to Road 1 North
3. No parking or stopping 6<sup>th</sup> Line from CR 109 to Road 1 North

A by-law is required to legally enforce these traffic measures.

## COMMENTS

### *Gillespie Lane*

Gillespie Lane was widened by the Town to prepare for IPM but its alignment is not suitable for high volumes of traffic. Closing Gillespie Lane to general traffic and only allowing service vehicles, tractors moving people from parking lots to Tented City, and exhibitor access to the service entrance is safer for all. Pedestrian and tractor crossings from the parking areas to Tented City will be clearly defined. Emergency vehicles have better access out of the site in the event they have to leave to another area.



### *6<sup>th</sup> Line*

Roads leading to the IPM site will be signed to encourage the general public to use the 6<sup>th</sup> Line to access the 300 acre parking lot. The 300 acre lot can accommodate over 12,000 parking spaces. The 130 plus acres of parking off CR 109 will be for people with disabilities,



exhibitors, volunteers, and general public who do not use the 6<sup>th</sup> Line. The Parking and Traffic Committee volunteers for IPM will direct traffic inside the parking areas.

The speed reduction and no parking or stopping on the 6<sup>th</sup> Line will ensure safer two way traffic movement by the plowing lands in this area. Tractors moving competitors from the main site to the plowing lands will have to mix with general traffic in parts. While the 6<sup>th</sup> Line is repaved from CR 109 to CR 6, it does not have large shoulders to accommodate parking and traffic. Parking and stopping on the road will be dangerous. Traffic will be heavy on the 6<sup>th</sup> Line particularly at the beginning and end of the day, but should move steadily to parking areas and plow lands.

Access to the RV Park is from CR 109 at the driveway to the old homestead. There will be six lanes of RV staging at that location. Typically RV's begin arriving the Friday before IPM begins so there is only a small chance of back-up on the roadway unless rain restricts access to the site. In that case RV's will be staged in locations nearby until the site is accessible. The exit from the RV Park is on the north end of the site by the Droog Farm. There will be a temporary waste pump out location installed at that location.

Parking for the event is to be on the RV stacking lanes for school buses accessing the education area. Coaches to the event will also park at that location and will be encouraged to park off-site at the arenas during the day.

**FINANCIAL CONSIDERATIONS:**

Signage will be required to post no stopping, no parking and reduced speed areas. There is some "in stock" signs from past events that can be used. Gillespie Lane would have construction barriers at CR 109 and the 6<sup>th</sup> Line to restrict public access.

**RECOMMENDATION:**

THAT Council receives the staff report dated July 27 regarding 2016 International Plowing Match and Rural Expo Temporary No Parking, No Stopping, Road Closure, and approves:

1. Speed reduction to 50 km/hour 6<sup>th</sup> Line from CR 109 to Road 1 North
2. Close Gillespie Land CR 109 to the 6<sup>th</sup> Line; restrict to IPM service vehicles, tractors
3. No parking or stopping 6<sup>th</sup> Line from CR 109 to Road 1 North

Mike McIsaac  
Roads and Drainage Foreman

Brian Hansen  
Public Works Director

Bill White  
C.A.O. Clerk