



TOWN OF MINTO

MEETING DATE: May 7, 2024

REPORT TO: Mayor and Council

SERVICE AREA: Public Works / Finance

SUBJECT: PW 2024-012 - Municipal Drain Maintenance Assessments

RECOMMENDATIONS:

THAT Council of the Town of Minto receives report PW 2024-012 regarding Municipal Drain Maintenance Assessments and considers passage of the related Assessment By-law in open session.

BACKGROUND:

The Drainage Act, R.S.O. is one of the oldest pieces of legislation in Ontario with its roots under Common Law. The process to establish a Municipal Drain and assess its costs is established under this Act. Once a Drain has been created, its ongoing maintenance is covered under Section 74. This legislation allows the cost of authorized maintenance and repair works to be assessed against all upstream lands and roads in the watershed of the Drain.

COMMENTS:

Drainage Superintendent Ryan Binkle has coordinated drain maintenance on the many Drains included in the Schedules of Assessment of Maintenance. The works were carried out by qualified contractors and the final costs and assessments were calculated. The final calculations are:

Drain	By-Law(s)	Repair Amount	Assessment less Allowances
56	2000	\$405.72	\$405.72
57	2009	\$1,005.34	\$715.64
90 Branch B	04-75	\$4,238.30	\$2,961.74

FINANCIAL CONSIDERATION:

The Town of Minto has paid all amounts due to contractors. The Town is also responsible for all costs assessed against municipally owned lands under these drainage assessments. Drainage assessments which are not paid upon receipt of a valid invoice may be collected in the same manner as property taxes.

STRATEGIC PLAN:

Goal 3: Strong Vibrant Economy

Progressively support our local businesses while leveraging Minto's competitive advantages to attract new economic investment.

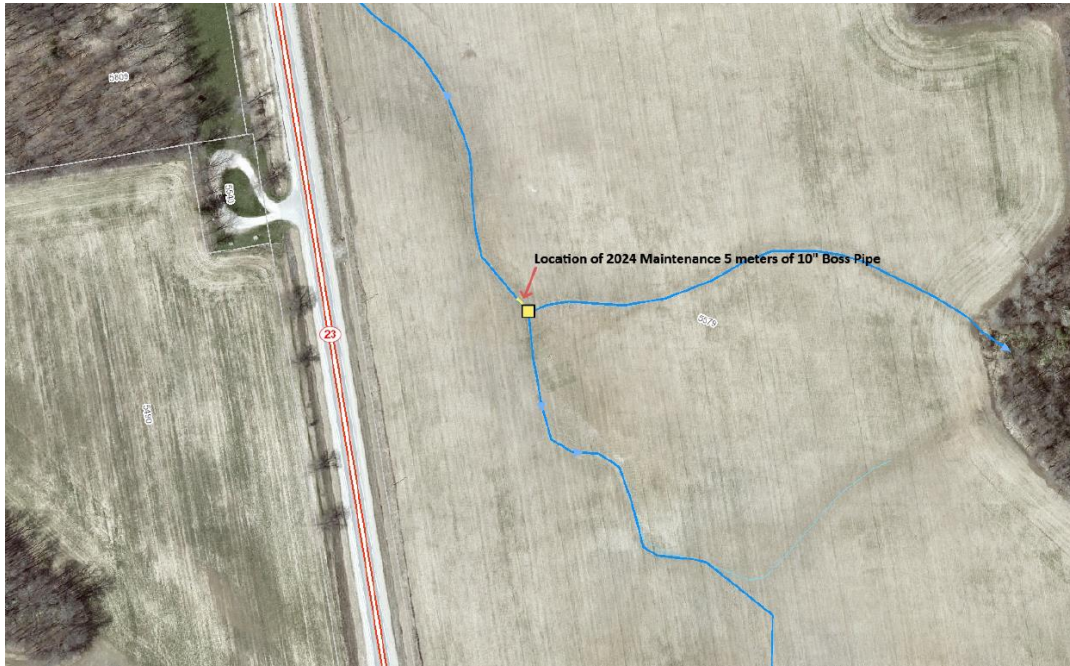
PREPARED BY: Ryan Binkle, Drainage Superintendent
Gordon Duff, Treasurer

RECOMMENDED BY: Chris Harrow, Chief Administrative Officer

Attachments:

Drain maps & Schedules of Assessment

Municipal Drain 56



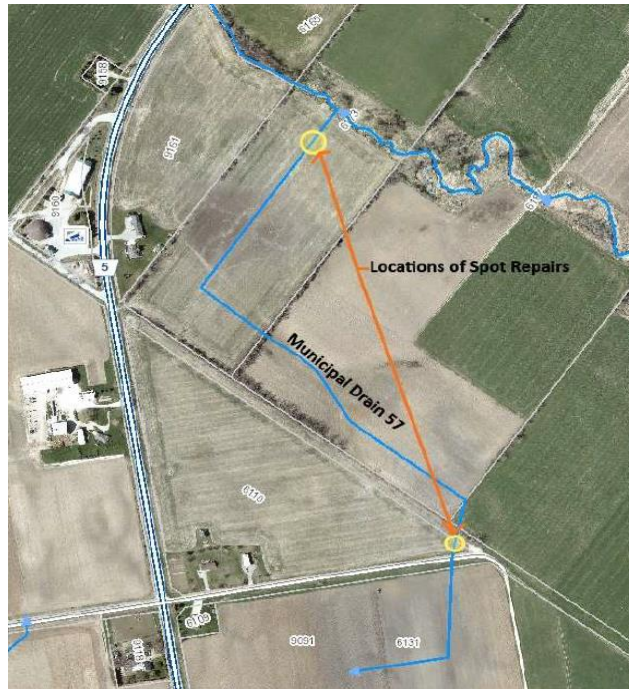
SCHEDULE OF ASSESSMENT FOR MAINTENANCE
Municipal Drain No. 56 – 2024
Town of Minto

By-Law No.: 2000

						Type of Repair	Repair Title	
						Total Maintenance Costs	\$405.72	
LOT OR PART	CON.	1963 ORIGINAL OWNER	Current Owner	ROLL NO.	1963 REPORT TOTAL ASSESSMENT	2024 USED FOR MAINTENANCE	REPAIR TOTAL ASSESSMENT	NET ASSESSMENT
(Main Drain)								
Lands								
E 1/2 23	5	Chas. McLaughlin	Daniel Schill	1-102	\$75.00	\$75.00	\$10.52	\$10.52
W 1/2 23	5	F. Gilbert	Adam & Denise Dickieson	1-103	\$418.00	\$1,106.00	\$155.09	\$155.09
24	5	F. Gilbert			\$688.00			
N Pt 25	5	Ford Lee	David & Claudette Taylor	1-104-10	\$1,430.00	\$1,314.85	\$184.37	\$184.37
S Pt 25	5		Nancy & David Maw	1-104		\$115.15	\$16.15	\$16.15
Pt N Pt 26	5	M. T. O.	M. T. O.	1-106	\$6.00			
Pt 26	5	Wes Wilkin	Susan Hebel	1-105	\$261.00	\$87.00	\$12.20	\$12.20
25	6	Ford Lee	David & Claudette Taylor	1-104-10	\$399.00			
26	6	Grant Crispin	Edwin & Melissa Wouters	1-135	\$871.00			
* 26	6		Jacob Neufeld	1-135-50				
27	6	Roy Heighes	Antonius & Maria Wouters	1-134	\$1,031.00			
28	6	C. Verway	Huip! Verway	1-133	\$9.00			
Total Assessment on Lands					\$5,188.00	\$2,698.00	\$378.33	\$378.33
Roads								
Highway 89		Ministry of Transportation Communications			\$550.00	\$183.33	\$25.71	\$25.71
Rd. Cons. 4 & 5		Township of Minto			\$12.00	\$12.00	\$1.68	\$1.68
Total Assessment on Roads					\$562.00	\$195.33	\$27.39	\$27.39
Total Assessment on Lands and Roads					\$5,750.00	\$2,893.33	\$405.72	\$405.72

Notes: 1. * Denotes lands not eligible for ADIP grants
2. The NET ASSESSMENT is the total assessment less a one-third (1/3) Provincial grant, if applicable

Municipal Drain 57



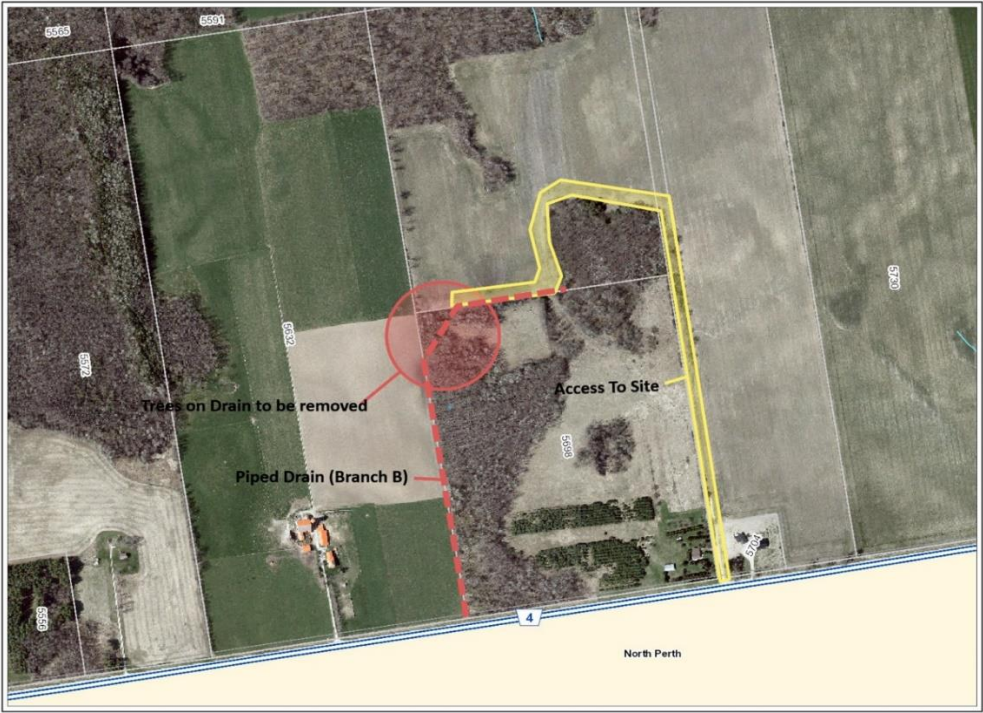
**SCHEDULE OF ASSESSMENT FOR MAINTENANCE
Municipal Drain No. 57 - 2023
Town of Minto**

By-Law No: 2009

By-Law No.: 2009					Type of Repair	Repair Tile			
					Total Maintenance Costs		\$1,005.33		
		1963	ROLL	1963	2019		REPAIR	LESS 1/3	
LOT OR				REPORT	USED		TOTAL	GOVT	NET
PART	CON.	ORIGINAL OWNER	NO.	ASSESSMENT	MAINTENANCE		ASSESSMENT	GRANT	ASSESSMENT
(Main Drain)									
Lands									
19	6	B. Connell	4-089	\$264.00	\$264.00		\$78.87	\$26.29	\$52.58
*	20	B. Brummelman	4-088	\$561.00	\$538.00		\$160.73	\$53.58	\$107.15
	4-088-50			\$23.00	\$6.87		\$6.87		
	21	J.P. Rundle	1-139	\$12.00	\$12.00		\$3.59	\$1.20	\$2.39
	20	E. Luesink	4-090	\$438.00	\$438.00		\$130.86	\$43.62	\$87.24
21	7	E. Luesink	1-141-50	\$12.00	\$12.00		\$3.59	\$1.20	\$2.39
*	N1/2 91	E. Luesink	4-001-40	\$46.00	\$36.00		\$10.76	\$3.59	\$7.17
	4-091			\$10.00	\$2.99		\$2.99		
	S 1/2 91	D. Vallance	4-004	\$640.00	\$640.00		\$191.21	\$63.73	\$127.48
92	D	R. Anderson	4-005	\$780.00	\$780.00		\$233.03	\$77.67	\$155.36
93	D	R. Anderson	4-006	\$189.00	\$189.00		\$56.47	\$18.82	\$37.65
Total Assessment on Lands				\$2,942.00	\$2,942.00		\$878.97	\$289.70	\$589.27
Roads									
Unopened Road		Town of Minto		\$69.00	\$69.00		\$20.61		\$20.61
Allowance									
7th Line		Town of Minto		\$252.00	\$252.00		\$75.29		\$75.29
Wellington Road 5		Wellington County		\$102.00	\$102.00		\$30.47		\$30.47
Total Assessment on Roads				\$423.00	\$423.00		\$126.37		\$126.37
Total Assessment on Lands and Roads				\$3,365.00	\$3,365.00		\$1,005.34	\$289.70	\$715.64

- Notes: 1. * Denotes lands not eligible for ADIP grants
2. The NET ASSESSMENT is the total assessment less a one-third (1/3) Provincial grant, if applicable
3. Net assessments are subject to a minimum charge of \$5.00.

Municipal Drain 90 Branch 'B'



SCHEDULE OF ASSESSMENT FOR MAINTENANCE

Municipal Drain No. 90 Branch 'B' - 2023

Town of Minto

By-Law No: 04-75

					Type of Repair	Repair Tile		
			2004	2023			Total Maintenance Costs	\$4,238.30
LOT OR	CON.	ROLL	REPORT	USED	2023	LESS 1/3		
PART		NO.	TOTAL	FOR	MAINTENANCE	GOV'T	NET	
			ASSESSMENT	MAINTENANCE	ASSESSMENT	GRANT	ASSESSMENT	
PT 31	1 S	1-026	68.0%	68.0%	\$3,230.99	\$1,077.00	\$2,153.99	
PT 31	1 N	1-027	10.8%	0.0%				
32	1	1-028	12.6%	12.6%	\$598.68	\$199.56	\$399.12	
Total Assessment on Lands			91.4%	80.6%	\$3,829.67	\$1,276.56	\$2,553.11	
Roads								
County of Wellington			8.6%	8.6%	\$408.63		\$408.63	
Total Assessment on Roads			8.6%	8.6%	\$408.63		\$408.63	
Total Assessment on Lands and F			100%	89.2%	\$4,238.30	\$1,276.56	\$2,961.74	

Notes: 1. All lands are eligible for DIP grants.

2. The NET ASSESSMENT is the total assessment less a one-third (1/3) Provincial grant, if applicable