

Wellington County Agri-food Systems Study - Key Findings



Economic Contribution

\$2.8 billion to Canada's Gross Domestic Product (GDP), which is **5%** of Ontario's agri-food industry's total contribution

\$496 million in labour income within farm and upstream jobs

\$79 million in provincial and federal tax revenue

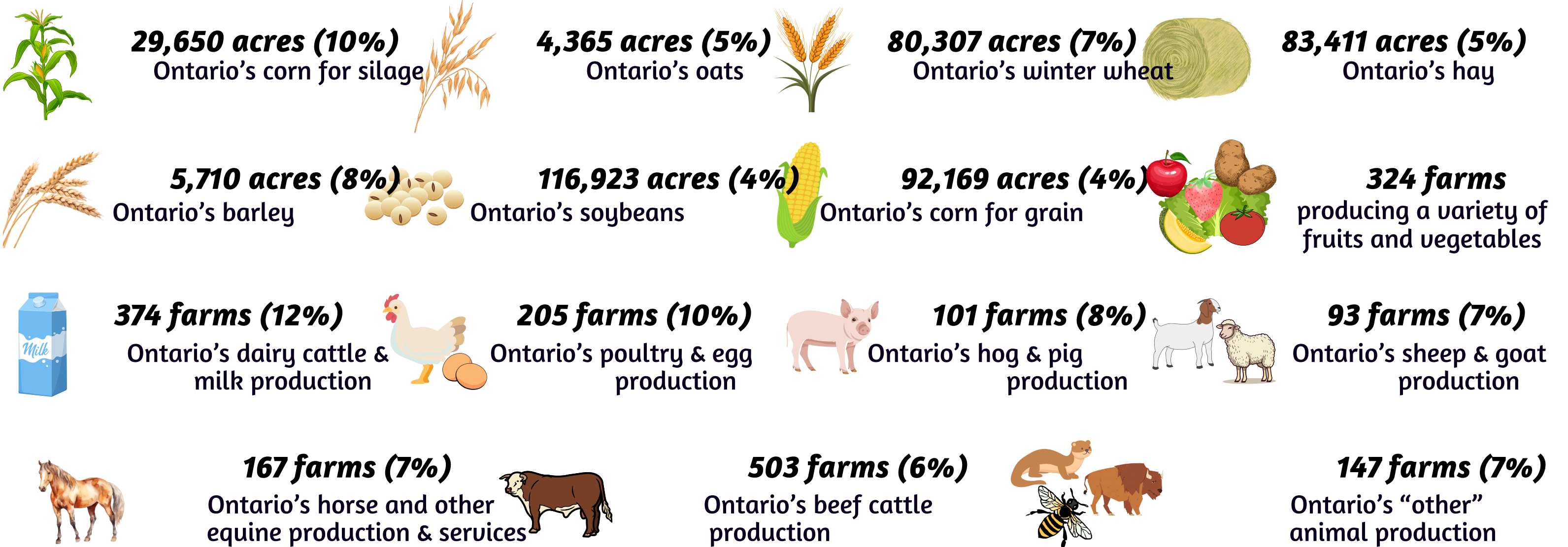
35,943 jobs and 6,621 full-time equivalent jobs

The growing conditions and high-quality soils in Wellington County make it a valuable asset in feeding the community, Ontarians, Canadians and the world. Wellington County farmers are innovators in adopting sustainable farming practices.

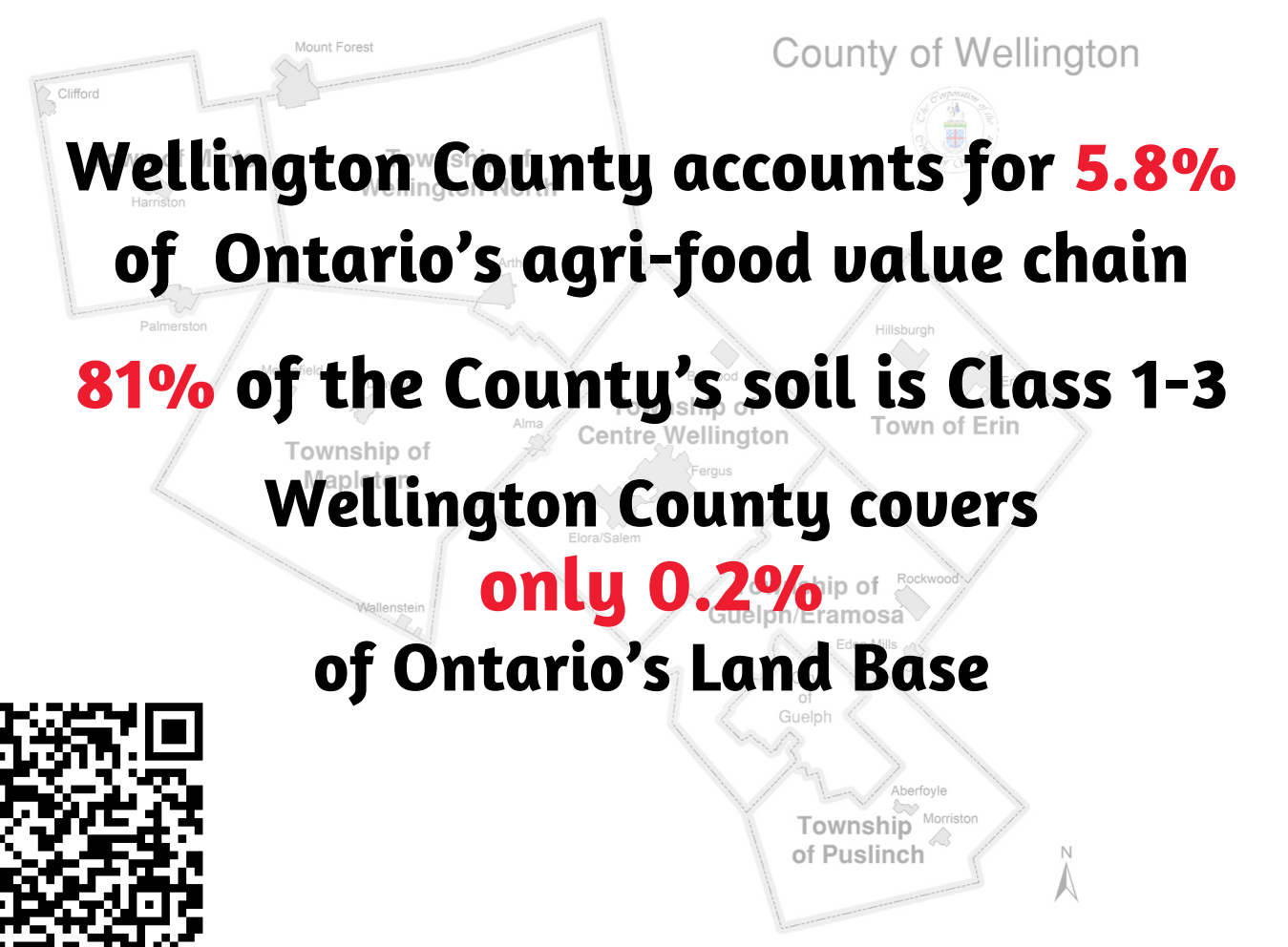
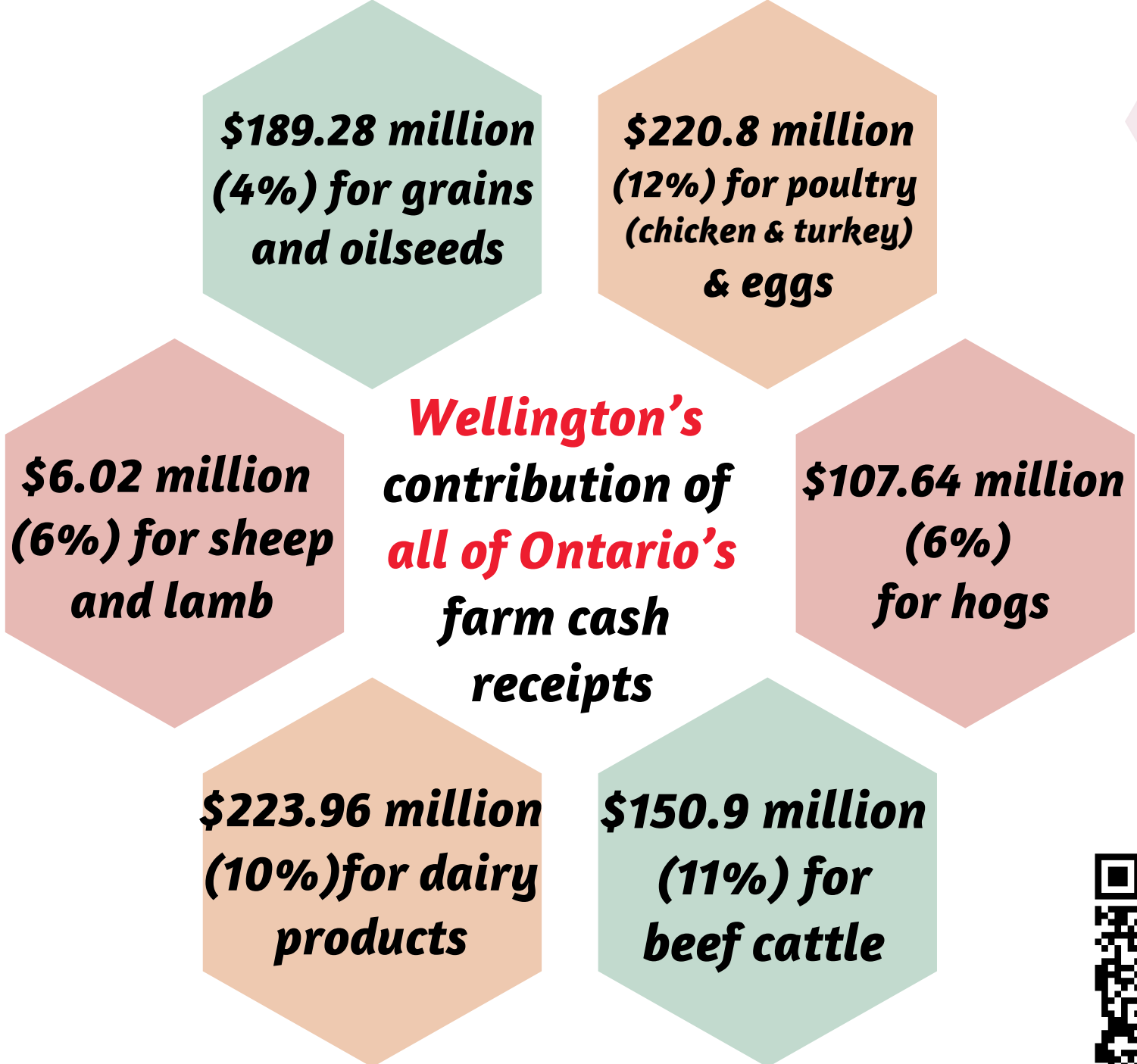


Wellington County boasts a strong agri-food processing sector.

Wellington County is home to:



Wellington County has a strong input and services sector that differentiates it from other rural Ontario communities.



Scan for full report



Farms  Food  Future

