

# Town of Minto Council Meeting October 18<sup>th</sup> 2016

---

**Report by Wellington Councillor David Anderson**

- 1. Wellington County Library August & September 2016 Use Statistics**
- 2. Wellington County Museum and Archives CIRCA newsletter.**
- 3. Wellington County OPP Statistic report from September 1<sup>st</sup> to September 30<sup>th</sup> 2016.**
- 4. Copy of the Wellington County Social Services Committee Agenda September 7<sup>th</sup> 2016 with a attached report on Social Infrastructure Fund.**
- 5. Wellington County report on Rural Collection Progress Report.**

1.

# Wellington County Library

## AUGUST AND SEPTEMBER 2016

### Use Statistics

Prepared for: Wellington County Library Board

Meeting Date: October 12, 2016

Prepared by: Chanda Gilpin, Assistant Chief Librarian

Date: October 5, 2016



# Use Statistics

2016      2016

System wide circulation:      August      September

Print, eBooks, cds, dvds, magazines and audiobooks:      102,201      84,913

Inter-library loan, material loaned:      478      338

Public computer usage within the libraries:      7,159      6,179

Programme attendance:      2,754      2,351

Database usage:      8,061      5,031

Public wireless users:      8,869      8,078

# Circulation Statistics

	JAN	FEB	MAR	APR	MAY	JUN	JULY	AUG	SEP	OCT	NOV	DEC	TOTALS
<b>ABOYNE</b>	12,479	10,993	14,565	11,264	12,268	12,391	16,870	13,469	10,593	11,634	10,940	11,188	148,654
<b>ARTHUR</b>	12,132	11,457	14,956	9,453	9,059	10,358	11,656	10,619	9,498	9,240	8,837	8,460	125,725
<b>CLIFFORD</b>	9,598	8,849	9,183	8,547	7,806	8,821	9,741	9,370	3,215	0	0	0	75,130
	4,587	4,321	4,716	4,768	4,506	4,762	6,459	5,209	4,493	5,137	4,440	4,430	57,828
	4,413	4,689	5,220	4,780	4,911	4,621	6,049	5,482	5,389	5,204	4,833	5,065	60,656
	4,905	5,271	5,831	5,103	4,882	5,204	5,353	6,061	5,135	0	0	0	47,745
	1,372	1,264	1,623	1,264	1,392	1,534	2,056	1,544	1,440	1,433	1,053	1,078	17,053
	1,306	1,124	1,336	1,339	1,249	1,173	1,711	1,644	1,459	1,507	1,188	1,404	16,440
	1,458	1,377	1,704	1,645	1,552	1,424	1,926	1,846	1,549	0	0	0	14,481
<b>DRAYTON</b>	9,908	9,502	10,947	9,314	8,648	9,901	13,317	10,716	9,503	9,266	8,430	8,401	117,853
	9,235	9,067	10,613	9,449	8,724	10,919	12,528	10,357	8,699	8,597	8,204	8,039	114,431
	8,900	9,731	9,811	10,304	8,697	8,571	12,599	10,827	8,133	0	0	0	87,573
<b>ELORA</b>	5,520	4,759	5,988	5,791	5,498	4,790	6,699	6,056	5,318	5,598	5,173	5,390	66,580
	5,513	4,870	6,082	6,043	5,924	6,581	7,708	7,383	6,612	6,749	6,084	6,568	76,117
	6,961	7,176	7,264	6,815	6,381	6,968	7,900	8,112	9,199	0	0	0	66,776
	4,214	3,793	4,766	4,285	4,198	4,226	6,107	4,765	3,867	4,604	4,361	4,585	53,771
	4,593	4,443	5,175	4,932	4,710	5,064	6,195	5,688	5,115	4,851	4,382	4,097	59,245
	4,519	5,410	5,617	5,181	5,043	4,794	6,435	5,582	4,450	0	0	0	47,031
<b>FERGUS</b>	10,052	9,000	10,803	11,077	10,023	8,008	13,506	11,435	10,249	10,272	9,285	9,397	123,107
	9,376	8,588	7,186	18,267	16,066	18,003	20,087	17,721	15,944	15,440	15,196	13,086	174,960
	14,728	16,746	17,776	16,537	15,128	16,103	21,085	19,747	18,338	0	0	0	156,188
	3,879	4,026	4,652	4,062	3,825	4,154	5,633	4,585	4,207	4,428	3,902	4,060	51,413
	4,238	3,969	5,039	4,544	4,444	4,303	5,310	5,026	4,648	4,232	4,372	4,028	54,153
	4,186	4,267	4,581	3,931	3,985	3,953	4,546	4,523	3,938	0	0	0	37,910
	3,547	2,845	3,440	3,632	3,147	3,370	4,271	3,524	2,835	2,923	2,473	3,009	39,016
	2,956	2,770	3,364	3,372	2,826	3,261	3,932	3,477	2,994	2,905	2,788	2,772	37,417
	3,120	3,257	3,510	3,195	2,960	2,977	3,602	3,729	3,215	0	0	0	29,565
	3,887	3,267	4,276	3,843	3,502	3,905	5,040	4,634	3,841	3,943	3,704	3,813	47,655
	3,668	3,554	4,246	4,191	4,002	4,208	4,450	3,948	3,692	3,684	3,465	3,602	46,710
	4,146	3,543	4,274	4,203	4,313	3,958	4,327	4,552	3,981	0	0	0	37,297
<b>MT FOREST</b>	7,392	7,539	8,416	7,486	7,476	7,246	10,308	8,180	7,949	8,120	7,236	7,596	94,944
	7,746	7,388	8,570	8,461	7,881	8,044	8,773	8,613	8,112	8,454	7,683	8,278	98,003
	8,633	8,816	9,233	9,215	8,862	9,760	10,522	10,648	8,930	0	0	0	84,619
<b>PALMERSTON</b>	2,100	1,944	2,239	2,410	2,188	2,403	3,270	2,707	2,411	2,801	2,236	2,325	29,034
	2,756	2,318	2,734	2,384	2,628	2,891	3,800	3,458	3,239	2,942	2,646	2,697	34,493
	2,612	2,530	3,504	3,977	3,348	3,508	4,444	4,715	3,618	0	0	0	32,256
	3,234	2,777	3,269	3,343	3,317	3,878	3,905	3,140	2,937	3,010	3,065	2,800	38,675
	2,918	2,781	3,364	3,292	2,777	3,025	3,738	3,196	2,954	3,035	2,675	2,585	36,340
	3,312	3,171	3,767	3,343	3,280	3,342	4,371	3,631	3,598	0	0	0	31,815
	5,942	5,473	6,930	6,867	6,236	6,997	8,758	7,191	6,339	6,553	6,428	5,889	79,603
<b>ROCKWOOD</b>	6,088	5,839	6,978	6,875	6,599	7,500	9,605	8,440	7,892	7,788	7,037	6,719	87,360
	7,397	7,863	8,576	8,038	7,164	7,195	9,927	8,858	7,614	0	0	0	72,632
<b>TOTALS</b>	82,483	75,324	91,148	83,629	80,544	82,606	110,806	91,661	80,221	84,169	77,130	78,420	1,018,141
	82,297	77,827	90,281	92,346	86,649	95,072	111,491	101,493	92,177	90,395	85,014	83,337	1,088,379
	84,475	88,007	94,631	90,034	83,401	86,578	106,778	102,201	84,913	0	0	0	821,018

Annual Change

3%

13%

5%

-3%

-4%

-9%

-4%

1%

-8%

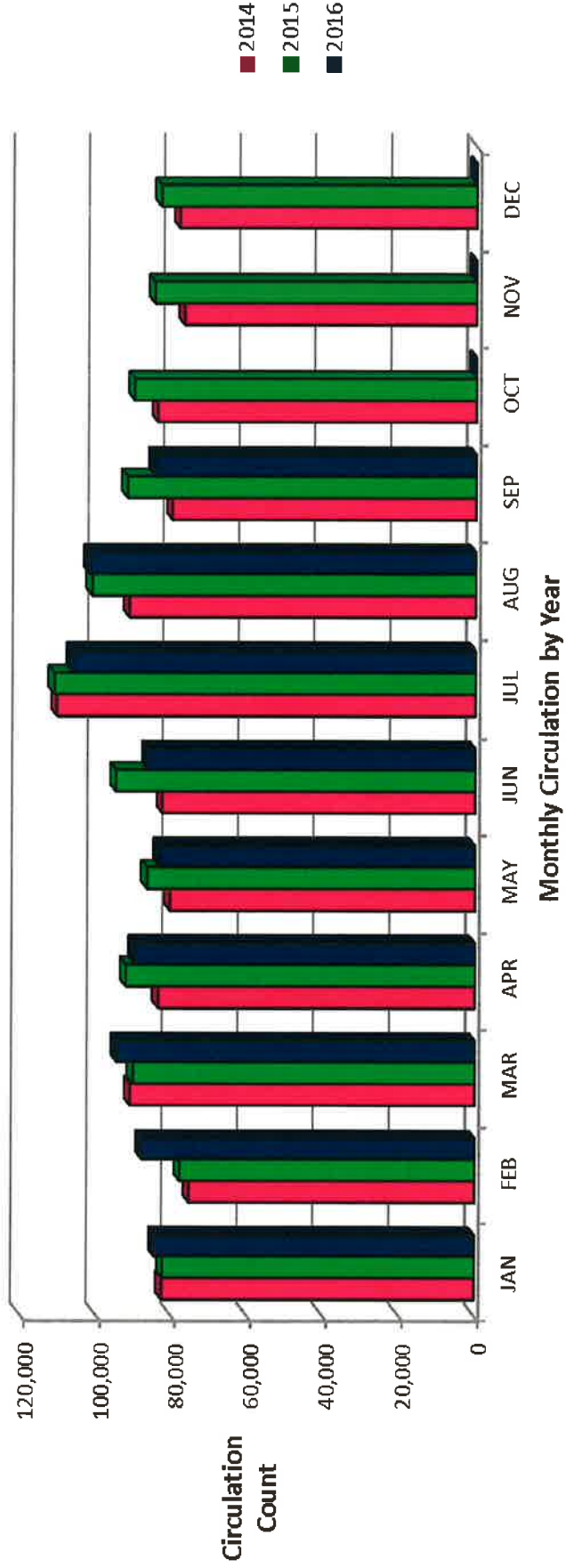
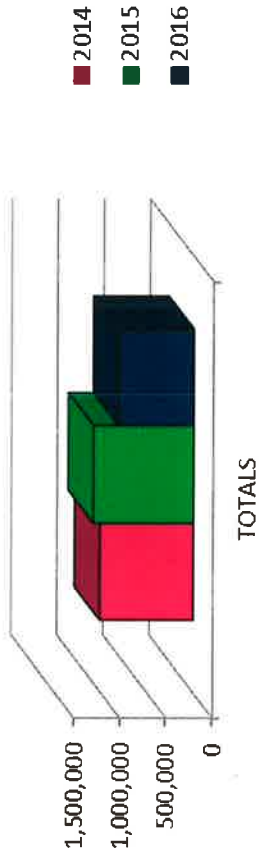
-1%

-1%

Numbers now include eBook circulation and in-house usage of material.

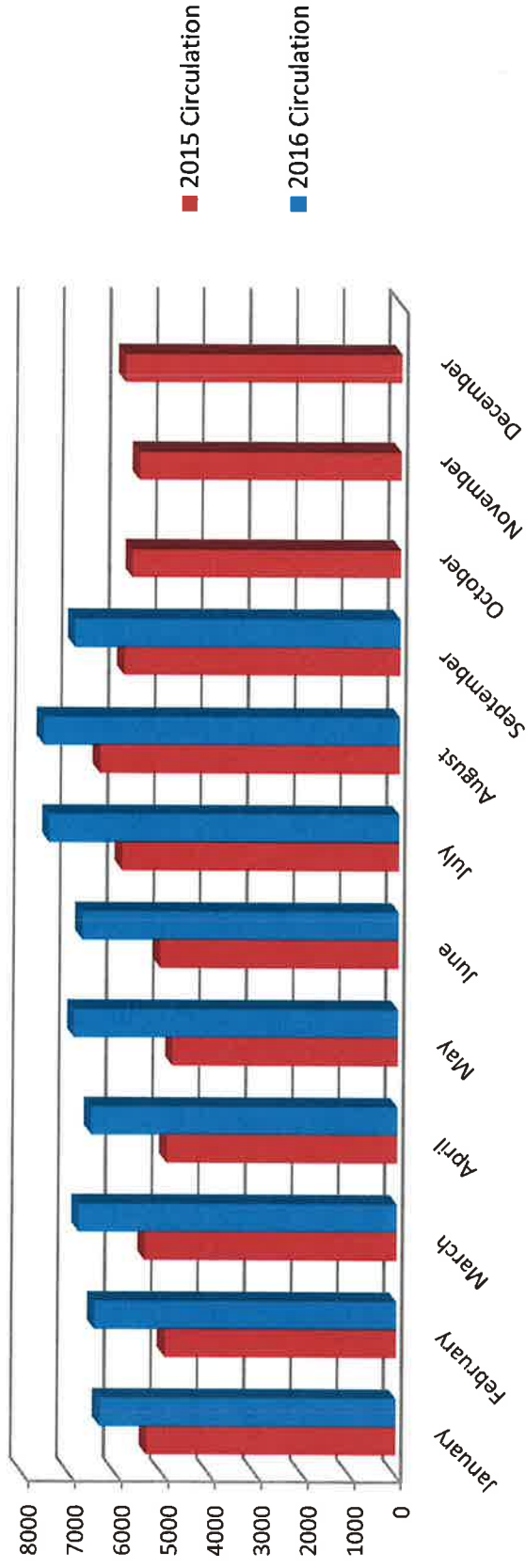
# Circulation Activity

## Wellington County Library Total Circulation of Materials by Year



# eBook Circulation Activity

eBook Circulation by Month\*



\*includes eBooks, eAudiobooks, eVideo and eMusic circulation from OverDrive.

# Website Statistics August and September 2016

## Top Pages Visited

Library Home Page	15,575
Online Resources	4,066
Borrowing	4,145
eBooks and More	1,661

Our website was accessed in a variety of ways including 4,372 visits through Mobile Devices.

Mobile devices include Apple iPad, Apple iPhone, BlackBerry Playbook, Samsung SM-G386W and LG D852 G.

## Visits to Library Website

# of total visits	19,831
# of pages viewed	39,699

### Location of people accessing our website:

Canada, U.S., New Zealand, U.K., Germany, France, India, Italy and United Arab Emirates.

### The majority of visitors were within Canada:

Fergus, Guelph, Toronto, Halton Hills, Kitchener, Minto, Orangeville, Clifford, Milton, Hamilton and Waterloo.

Of the visitors 68% were returning and 32% were new visitors to our website.

# Programming Report

August 2016

August 2015

BRANCH	TOTAL NUMBER OF PROGRAMMES OFFERED	ATTENDEES		
		CHILDREN/ TEENS	PARENTS/ CAREGIVERS	ADULTS
ABOYNE	4	35	16	0
ARTHUR	20	249	7	47
CLIFFORD	12	79	8	4
DRAYTON	16	299	28	1
ELORA	13	115	16	34
ERIN	15	284	14	19
FERGUS	21	111	37	47
HARRISTON	24	277	47	35
HILLSBURGH	13	60	39	39
MARDEN	12	34	7	32
MT FOREST	29	301	48	49
PALMERSTON	19	86	12	16
PUSLINCH	13	88	31	19
ROCKWOOD	7	50	23	11
	<b>218</b>	<b>2068</b>	<b>333</b>	<b>353</b>
	Total Programmes	Total Participants		

BRANCH	TOTAL NUMBER OF PROGRAMMES OFFERED	ATTENDEES		
		CHILDREN/ TEENS	PARENTS/ CAREGIVERS	ADULTS
ABOYNE	10	255	125	12
ARTHUR	19	338	28	36
CLIFFORD	7	51	11	2
DRAYTON	10	135	11	0
ELORA	8	48	13	42
ERIN	8	384	12	3
FERGUS	20	147	59	32
HARRISTON	30	455	113	52
HILLSBURGH	15	142	47	49
MARDEN	11	41	7	28
MT FOREST	21	252	40	43
PALMERSTON	13	55	20	33
PUSLINCH	16	142	86	0
ROCKWOOD	23	134	49	15
	<b>211</b>	<b>2579</b>	<b>621</b>	<b>347</b>
	Total Programmes	Total Participants		



# Programming Report

September 2016

September 2015

BRANCH	TOTAL NUMBER OF PROGRAMMES OFFERED	ATTENDEES			ADULTS
		CHILDREN / TEENS	PARENTS/ CAREGIVERS	ADULTS	
ABOYNE	0	0	0	0	0
ARTHUR	22	88	58	107	107
CLIFFORD	13	59	4	8	8
DRAYTON	26	214	89	39	39
ELORA	11	55	13	60	60
ERIN	18	227	49	33	33
FERGUS	21	115	79	98	98
HARRISTON	18	44	28	43	43
HILLSBURGH	13	47	22	56	56
MARDEN	15	41	12	63	63
MT FOREST	20	96	21	92	92
PALMERSTON	18	97	12	26	26
PUSLINCH	12	82	37	58	58
ROCKWOOD	6	42	27	10	10
<b>Total Programmes</b>	<b>213</b>	<b>1207</b>	<b>451</b>	<b>693</b>	<b>2351</b>
					<b>Total Participants</b>

BRANCH	TOTAL NUMBER OF PROGRAMMES OFFERED	ATTENDEES			ADULTS
		CHILDREN/ TEENS	PARENTS/ CAREGIVERS	ADULTS	
ABOYNE	19	134	56	50	50
ARTHUR	20	140	45	137	137
CLIFFORD	11	47	26	2	2
DRAYTON	23	170	82	18	18
ELORA	11	111	27	76	76
ERIN	20	104	42	23	23
FERGUS	25	187	110	72	72
HARRISTON	18	73	33	85	85
HILLSBURGH	16	93	30	149	149
MARDEN	13	45	9	85	85
MT FOREST	21	153	31	116	116
PALMERSTON	14	61	30	33	33
PUSLINCH	13	118	68	48	48
ROCKWOOD	17	131	78	20	20
<b>Total Programmes</b>	<b>241</b>	<b>1567</b>	<b>667</b>	<b>914</b>	<b>3148</b>
					<b>Total Participants</b>



**House of Industry Barn will be open until the end of October**

Be sure and come out to see our new team of "horses" (model workhorses created by Susan Strachan Johnson)!

**Poor House Spirit Walks**

Meet a new cast of characters from the Poor House Past!

**Poor House Spirit Walks**

October 20, 21, 27 and 28, 7:00 pm and 8:00 pm

**Poor House Cemetery Walks**

October 26, 7:00 pm and 8:00 pm

October 30, 2:00 pm and 3:00 pm

Space is limited, tickets must be purchased in advance, no tickets at the door.

**Admission is \$8.00 plus HST per person**



**Family HALLOWEEN Day**

- Costume Parade at 3:30 pm
- Halloween Crafts
- Games
- Spooky Stories in the Barn

Make your own puppets • Pumkin and Gourd decorating  
Bring your own clothes and make a scarecrow!

**Drop-in format all afternoon**  
Admission by Donation



# Thank you!

## to our 2016 Summer Students

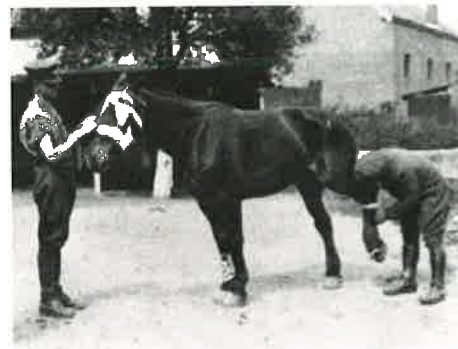
**for all your hard work and dedication to the Museum and Archives!**

Pictured L to R: Julie O'Donnell and Gabriel Masewich, Ailish Farrelly serving tea



## War Horse and the Canadian Army Veterinary Corps (November 5 to April 23)

Although the First World War was the first 'mechanized' war, it was the horse that was the driving engine for the transport of large artillery, equipment and supplies. Over 130,000 work horses were sent from Canada to France and Belgium and suffered from shellfire, trauma and disease. Because the horses were so vital to the war effort, it was the job of hundreds of Canadian veterinarians to heal wounds, prevent disease and return the horses to their war duties. From the collection of the Ontario Veterinary College, Guelph, we present this riveting exhibit of artifacts and photographs. On Saturday, November 5 at 1pm, after the Remembrance ceremony on the front lawn, Dr. Lisa Cox, Curator at OVC, will present her talk "Remembering Canada's War Horses, 1914 – 1918."



## ArtiFACT "Swan" Baby Stroller, 1969

The bright floral print and shiny chrome of this stroller makes it really stand out in a crowd! It was made in 1969 by Lines Bros. (Canada) Ltd. of Waterloo. The fringed canopy blocked the sun, and the seat adjusted to babies and growing toddlers! Edith and Heinz Wagner of Minto Township used it to carry their youngest daughter, Julie, until the mid-1970s. Groovy!



**Friendly Reminder:**  
The Wellington County Museum and Archives will be **CLOSED** on the Thanksgiving Holiday Monday October 10, 2016.

# Happy Thanksgiving!



**A NATIONAL HISTORIC SITE**  
located on Wellington Road 18 between Fergus and Elora  
[www.wellington.ca/museum](http://www.wellington.ca/museum)  
T 519.846.0916 x 5221 | Toll Free 1.800.663.0750 x 5221



Alternate formats available upon request.



3.



**Ontario Provincial Police  
County of Wellington Detachment**

Inspector Scott Lawson

**Report for the  
County of Wellington Police Services Board**

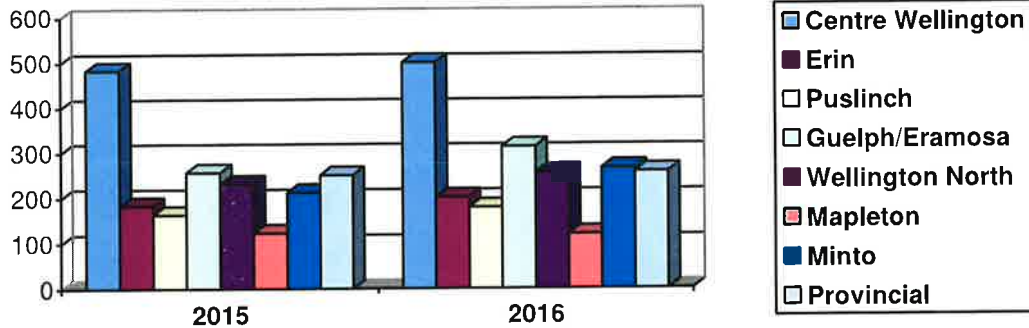
**October 2016**

This report covers the period from September 1<sup>st</sup>, 2016 to September 30<sup>th</sup>, 2016



## Calls for Service

**Calls for Service September 2015  
vs September 2016**



## Calls For Service

Municipality	2010	2011	2012	2013	2014	2015	2016
Centre Wellington	6,214	5,996	6,449	5,961	5,917	5,686	4,419
Town of Erin	2,152	2,156	2,322	2,167	2,129	2,161	1,627
Puslinch Township	1,836	2,157	2,404	2,178	2,128	1,987	1,595
Guelph/Eramosa	3,224	3,615	3,272	3,397	3,462	3,227	2,660
Wellington North	3,172	3,169	3,136	3,337	2,905	2,796	2,250
Township of Mapleton	1,252	1,320	1,322	1,349	1,418	1,291	1,085
Town of Minto	2,322	2,384	2,725	2,524	2,438	2,398	1,925
Provincial	2,378	2,392	2,694	3,214	3,051	2,677	2,144
<b>Totals</b>	<b>22,550</b>	<b>23,189</b>	<b>24,324</b>	<b>24,127</b>	<b>23,448</b>	<b>22,223</b>	<b>17,705</b>

## Victim Services Wellington

2016 YTD Calls for Assistance County of Wellington OPP	Previous Year Totals	
<b>85</b>	2013	100
	2014	91
	2015	76

## 911 Calls

2016 YTD	750
2013	2,520
2014	2,104
2015	1,513

## Ontario Sex Offender Registry

2016 YTD OSOR Registrations	Previous Year Totals	
<b>62</b>	2013	70
	2014	75
	2015	72

## False Alarms

2016 YTD	553
2013	961
2014	881
2015	766

\*This is NOT the number of sex offenders residing in Wellington County



## Crime

<b>Crimes Against Persons</b>	2015	2016 YTD
Homicide	2	0
Sexual Assault	34	45
Robbery	4	3
Assault	147	149

<b>Crimes Against Property</b>	2015	2016 YTD
Break & Enter	175	137
Auto Theft	45	87
Theft	459	530
Mischief	276	274

<b>Other Crime</b>	2015	2016 YTD
Fraud Investigations	174	243
Drug Investigations	265	197

<b>Other Investigations</b>	2015	2016 YTD
Domestic Disputes	278	303
Missing Persons	47	63
DNA Samples	35	36

<b>Crime Breakdown 2016 YTD</b>	North Wellington	Centre Wellington	South Wellington
Homicide	0	0	0
Sexual Assault	16	14	14
Robbery	1	0	2
Assault	58	48	40
Break & Enter	69	26	39
Auto Theft	45	9	26
Theft	220	128	173
Mischief	104	73	87
Fraud Investigations	100	82	59
Drug Investigations	63	45	68
Domestic Disputes	113	92	97
Missing Persons	30	26	6



## Major Crime Unit (MCU)

Supervisor: Detective Sergeant C. ASHMORE

The Wellington County Major Crime Unit has several investigations ongoing over the month of September involving threats, elder abuse, child pornography, stolen firearms and a criminal negligence causing death case. Several sexual assault complaints handled by MCU were concluded with charges being laid in three different investigations.

The Major Crime Unit also continues to investigate two historic files from Wellington County. In addition, several local Detectives remain assigned and actively involved in the December 2015 Town of Erin homicide investigation.

On top of the above noted occurrences, the Wellington County Major Crime Unit, as mandated, supports submissions to the Ontario Sex Offender Registry. A specially trained Detective also conducts social media intelligence for many criminal investigations.

The Unit also assists with High Risk Offenders, DNA submissions, manages Crime Stoppers complaint investigations, provides ongoing benchmark assistance to frontline officers and spends significant time preparing court case disclosures.

## Street Crime Unit (SCU)

Supervisor: Detective Sergeant D. KING

For the month of September the Wellington County Street Crime Unit (SCU) was involved in several investigations, proactive initiatives and training.

The SCU assisted the front line officers with the preparation and execution of a search warrant on a residence and recovered stolen property that had been taken from a local business the previous night, members also seized illegal drugs. The SCU members further supported front line investigations by drafting evidence-based search warrants with the hope of identifying those persons responsible for several break and enters. The SCU assisted the Wellington County Major Crime Unit with drafting of warrants to support a serious criminal investigation.

The SCU worked with neighbouring OPP Detachments and Regional Police services on two joint forces initiatives; one involving auto theft in the north end of the County and residential break and enters in the south end of the County. SCU members attending the South Bruce OPP Detachment Intelligence meeting where several Crime Unit investigators from OPP Detachments and Municipal Police Services shared information. The SCU identified and developed focus patrols to reduce thefts in dog parks in the south end of the County.

SCU members attended training on human source development and they assisted with public safety and foot patrol at the Wellington County International Plowing Match.



## Traffic

### Enforcement

Traffic	2016 YTD
Speeding	4,769
Seatbelt Offences	276
Careless Driving	174
Drive Under Suspended	158
Distracted Driver Offences	129
Other Moving Violations	311
Equipment and Other HTA	1,861
No Insurance - CAIA	56
<b>Other Provincial Acts</b>	<b>2016 YTD</b>
Liquor Licence Act	254
Trespass to Property Act	179
Other Provincial Acts	35
Other CAIA	79
<b>By-Law Offences</b>	
By-Law Offences (General)	611
Taxi By-Law	0
<b>County of Wellington OPP 2016 Total</b>	<b>8,592</b>
<b>West Region Traffic Unit 2016 Total</b>	<b>300</b>
2016 Total Traffic	7,734
2016 Total Other Provincial	547
2016 Total By-Law	611
<b>2016 POA Charges</b>	<b>8,892</b>
2015 POA Charges	12,303

### Drinking and Driving

Impaired Driving	2015	2016
R.I.D.E. Vehicle Stops	21,966	24,078
Roadside Alcotests	387	278
Warn Suspensions	115	76
ADLS Suspensions	99	90
Persons Charged	100	98

### Racing

2016 HTA Sec. 172 Impoundments	Previous Year Totals	
<b>145</b>	2013	93
	2014	108
	2015	110

### Parking Enforcement

Municipality	2015	2016
Centre Wellington	334	304
Erin	38	32
Puslinch	28	23
Guelph / Eramosa	313	192
Wellington North	66	22
Mapleton	9	6
Minto	25	23
County / Other	0	1
<b>Parking Totals</b>	<b>803</b>	<b>603</b>





## Traffic

### Suspect Apprehension Pursuits

2016 YTD Pursuits / Fail to Stop for Police	Previous Year Totals	
<b>5</b>	2013	8
	2014	9
	2015	14

Wellington County Command Staff would like to thank Sergeant R. NIXON for his outstanding three year term as the Traffic Management Unit Sergeant. As of September 25<sup>th</sup>, Sergeant NIXON returned to Platoon and Sergeant D. CLARK took over as the Traffic Management Unit Sergeant for the next three year duration.

## Traffic Initiatives

### Automated Licence Plate Reader (ALPR)

The Wellington County OPP Traffic Management Unit conducted 78 hours of patrol in the Automated Licence Plate Reader (ALPR) cruiser during the month of September. Officers laid 27 charges under the Highway Traffic Act and three charges under the Compulsory Automobile Insurance Act; officers also performed five roadside breath tests.

### Marine Patrol

Marine patrol was limited to 14.50 hours during the month of September due to low water levels. There were no major events on the waterways thus officers were reassigned to security at the International Plowing Match and Rural Expo.

### Bike Patrol

Bike patrol officers were kept busy during the month of September. Officers on bike patrol along the Cataract Trail in Erin arrested four youths on the first day of school for possession of a controlled drug.

Bike patrol officers were assigned to the International Plowing Match with two officers assigned to patrol on bicycles each day. Bicycle officers also attended the RCMP Musical Ride in the Town of Erin and conducted safety patrols along the Terry Fox Charity Run also in Erin.

Bike patrol officers proactively issued one Controlled Drug and Substance Act charge, 20 Highway Traffic Act charges and one Liquor Licence Act charge during the month of September.



## Traffic

### Motor Vehicle Collisions

Month	Victims			Collisions								
	Total Victims	Persons Killed	Persons Injured	Total MVC	Fatal	PI	PD	Alcohol Involved			CMV	SMV
								Yes	No	Unk		
JAN	26	0	25	170	0	19	150	4	145	21	17	85
FEB	31	1	30	137	1	23	113	3	125	9	10	71
MAR	21	2	19	131	2	14	113	8	105	18	12	62
APR	34	0	34	122	0	28	94	7	107	8	8	45
MAY	38	0	38	128	0	25	103	4	107	17	14	43
JUN	43	2	41	152	2	27	123	5	132	15	14	46
JUL	25	1	24	114	1	19	94	0	103	11	13	29
AUG	46	2	44	140	2	29	108	7	111	22	10	47
SEP	44	1	43	109	1	32	75	3	100	6	9	27
OCT												
NOV												
DEC												
<b>TOTAL</b>	<b>308</b>	<b>9</b>	<b>298</b>	<b>1203</b>	<b>9</b>	<b>216</b>	<b>973</b>	<b>41</b>	<b>1035</b>	<b>127</b>	<b>107</b>	<b>455</b>

### Yearly Collision Summary

Collision Type / Characteristic	2010	2011	2012	2013	2014	2015	2016
Total Reportable MVC	1,813	1,976	1,875	2,095	1,959	1,728	1,203
Property Damage MVC	1,525	1,649	1,565	1,761	1,758	1,418	973
Personal Injury MVC	282	320	302	326	195	297	216
Fatal MVC	6	7	8	8	6	6	9
Persons Killed	6	7	9	9	6	6	9
Persons Injured	425	463	442	481	330	428	298
Alcohol Involved	42	57	63	37	40	48	41
<b>Total MVC</b>	<b>1,813</b>	<b>1,976</b>	<b>1,875</b>	<b>2,095</b>	<b>1,959</b>	<b>1,728</b>	<b>1,203</b>

### Car vs Deer Collisions

Municipality	2015	2016
Centre Wellington	49	33
Erin	13	16
Puslinch	19	28
Guelph / Eramosa	27	32
Wellington North	36	17
Mapleton	18	19
Minto	32	28
City of Guelph	2	3
Provincial Highways	1	0
<b>Total Collisions</b>	<b>197</b>	<b>176</b>

4.



**The Corporation of the County of Wellington  
Social Services Committee  
Agenda**

September 7, 2016

1:00 pm

County Administration Centre

Guthrie Room

Members: Warden Bridge; Councillors Anderson (Chair), Black, Davidson, L. White

---

	Pages
<b>1. Call to Order</b>	
<b>2. Declaration of Pecuniary Interest</b>	
<b>3. Delegation:</b>	
3.1 Mr. Derrick Thomson, CAO, City of Guelph Introduction and Overview of New Role	
<b>4. Webster Place Construction Status Report #2</b>	3 - 3
<b>5. Financial Statements as of July 31, 2016</b>	4 - 9
<b>6. Child Care</b>	
6.1 Ontario Early Years Child and Family Centres	10 - 17
6.2 Delegates from Singapore	18 - 19
<b>7. Housing</b>	
7.1 Social Infrastructure Fund	20 - 23
7.2 Survivors of Domestic Violence Portable Housing Benefit Pilot Update	24 - 25
7.3 Housing Services Status and Activity Report	
7.3.1 Quarter 1	26 - 26
7.3.2 Quarter 2	27 - 27
<b>8. Ontario Works</b>	
8.1 2016 Ontario Works Service Plan	28 - 62
8.2 OW Rate Increase and Exemption of Child Support Payments	63 - 64
8.3 Increase to Homelessness Partnering Strategy Funding	65 - 68
8.4 Ontario Works Statistics	69 - 70
<b>9. 2016 National Housing Strategy</b>	71 - 71

**10. 2016 Social Infrastructure Fund - Investment in Affordable Housing**

72 - 73

**11. Closed Meeting**

**12. Rise and Report**

**13. Adjournment**

Next meeting date October 12, 2016 or at the call of the Chair.



# COUNTY OF WELLINGTON

## COMMITTEE REPORT

**To:** Chair and Members of the Social Services Committee  
**From:** Ryan Pettipiere Director of Housing  
**Date:** Wednesday, September 07, 2016  
**Subject:** Social Infrastructure Fund

### Background:

Since the 2016 federal budget was announced there has been much anticipation of the federal and provincial government’s Social Infrastructure Fund (2016 SIF) and additional investments in the area of social housing. We are pleased to report that specifics of both federal and provincial investments and subsequent programmes have been released. Specifically, these announcements included the following investments in housing:

- An increase to the funding under the current Investment in Affordable Housing (IAH)
- Funding for the construction and renovation of affordable housing for seniors
- Funding for the renovation and retrofit of social housing; and
- Funding for the construction and renovation of shelters and transitional housing for survivors of domestic violence.

The additional IAH funding and the seniors funding are being allocated and administered to Service Managers as one programme. The renovation and retrofit of social housing funding being allocated to Service Managers is being called the Social Housing Improvement Programme (SHIP) and is a separate allocation.

Based on the attached letter addressed to the Warden dated June 21<sup>st</sup> from the provincial Minister of Housing, we are pleased to report that notional funding allocations have been provided to the County of Wellington CMSM in the following amounts based on these categories for the 2016-2017 and 2017-2018 fiscal years:

Programme	2016-17	2017-18
IAH/Seniors	\$2,271,000	\$1,641,500
SHIP	\$2,402,700	\$0

A detailed report updating the Committee on planned expenditures of these funding allocations will be brought forward for the October Social Services Committee meeting.

### Recommendation:

That the Social Infrastructure Fund Report be received for information.

Respectfully submitted,

5.



## COUNTY OF WELLINGTON

---

### COMMITTEE REPORT

**To:** Chair and Members of the Solid Waste Services Committee  
**From:** Gordon J. Ough, P.Eng., County Engineer  
**Date:** Tuesday, September 06, 2016  
**Subject:** Rural Collection Progress Report

---

#### **Background:**

At the March Solid Waste Services (SWS) and County Council meetings, the decision was made to expand rural collection of waste and recyclables throughout the County. Planning for the service expansion commenced immediately following the decision, and staff made a successful rollout of rural collection a top priority. Expanded rural collection began the week of July 5.

Since the March meetings, reports have been received for information at the May and June SWS Committee and Council. These provided updates on the noteworthy developments of the expanded rural collection rollout. The following report presents the highlights of the final preparations and early results of the expanded service.

#### **Operations Update:**

##### **Blue Box Delivery**

From late May until mid-June a number of SWS staff participated in delivering the new, larger 22-gallon blue boxes. The larger blue box will better accommodate recyclable volumes with consideration of the bi-weekly rural collection schedule. With the addition of flower pots and planter trays to the blue box programme this year, and with packaging trends of having bulky plastic containers, the larger blue box will be a convenient tool for County residents and will now be the standard size box for future County orders.

Over 7,000 rural homes and businesses received boxes with a total of 14,056 blue boxes and introductory packages delivered throughout the County.

A small number of households contacted SWS to advise that they did not receive blue boxes or the introductory packages. Blue boxes were dropped off to residents who didn't receive them initially. After a period of time the extra boxes were distributed to waste facilities where they were available to be picked up by residents. Introductory packages were mailed to those who misplaced or did not receive the information.

##### **Programme Start-up**

With any service expansion of a large scale, it can be expected that there will be some issues or problems associated with implementation. Hearing feedback from the contracted Waste Management (WM) drivers and from County staff, this rollout went relatively well compared to rural collection expansions in the past.

During the first several weeks of rural collection there was some confusion amongst the public which was anticipated. The misunderstandings in the rural areas were primarily due to residents not being aware of which side of the road to set their materials on. SWS staff were on the road and in contact with WM staff. Where waste and recyclable set-outs were noted to be on the wrong side of the road, the items were moved to the correct side and information was left advising the resident of proper placement instructions.

Due to WM overhauling their routes to accommodate the rural areas, some urban residents experienced a different time of collection than they were accustomed to in the past. This led to some instances of materials not being collected. This provided SWS an opportunity to reinforce the message for residents to set out their waste and recyclables by 7am to better ensure their materials are collected.

### Initial Participation Statistics

Participation data is gathered by monitoring selected areas within a Town/Township for a month at a time on a quarterly basis throughout the year. Every year new areas are selected to be monitored. Some community's data may be under or over-stated depending on the areas selected. Participation tracking reflects a snapshot in time but as there are more areas monitored over the years, the statistics become more accurate and refined.

The participation numbers below display initial results from rural collection since the expansion, as well as the data from the end of the rural collection pilot in Guelph/Eramosa and Minto in 2008. The 2016 results from Guelph/Eramosa and Erin have been tracked for all of 2016, as opposed to only since the July 5 expansion.

Rural Collection Participation Rates - 2016 vs 2008 Pilot

Town/ Township	2016 Garbage	2016 Recycle	2008 Garbage	2008 Recycle
Mapleton	21%	64%	-	-
Minto	27%	52%	17%	38%
Centre Wellington	20%	40%	-	-
Wellington North	20%	46%	-	-
Puslinch	21%	46%	-	-
<b>Overall</b>	<b>22%</b>	<b>46%</b>	-	-
Guelph- Eramosa	48%	72%	32%	58%
Erin	68%	80%	-	-
<b>Overall</b>	<b>58%</b>	<b>76%</b>	<b>25%</b>	<b>49%</b>

The above statistics from the beginning of the 2016 expanded rural service compare closely to the participation at the end of the 2007-2008 Rural Collection Pilot in Minto and Guelph/Eramosa. This suggests an early adoption of the expanded service by rural residents.

The long-term trend, which has been observed in Wellington County, has been that as the service becomes more established it is utilized by many more residents. The above table shows the relatively higher current rural collection participation rates in the Town of Erin and Township of Guelph/Eramosa, which have been receiving the service for a number of years.

### Promotion and Education Update:

#### Public Feedback

From May 1 until August 23 the topic of rural collection accounted for 30% of the 1,570 calls and 27% of the 108 emails SWS received during that time. While a small minority was not in favour of the expanded service, the majority of calls and correspondence were supportive of the change and/or simply had questions on how to participate.

Residents using County waste facilities have also been largely supportive and receptive to County-wide rural collection.

As with any significant change in service, SWS and Communications staff coordinated a comprehensive communications programme to inform residents of the changes. A summary of the key components of the plan is provided in the table below. Copies of completed and approved media are attached for Committee’s information.

Media Tool	Approximate Start Date	Status
Media Release - decision	March 31	Complete
County Page ads – April to September	April 8	Complete
Spring Newsletter in Wellington Advertiser	April 29	Complete
County Website	May 9	Complete
eNews Notices – May through September	May 18	On-going
Posters	May 18	Complete
Postcards	May 18	Complete
Introductory package delivered to each home along with two blue boxes, includes: <ul style="list-style-type: none"> <li>• introduction to service</li> <li>• municipal collection map</li> <li>• collection schedule</li> <li>• participation information</li> <li>• list of user pay bag distributors</li> </ul>	May 30	Complete
Radio commercials – 4 weeks	June 13	Complete
Fall Newsletter in Wellington Advertiser	October 28	

**Recommendation:**

That the report titled “Rural Collection Progress Report” be received for information.

Respectfully submitted,



Gordon J. Ough, P.Eng.  
County Engineer