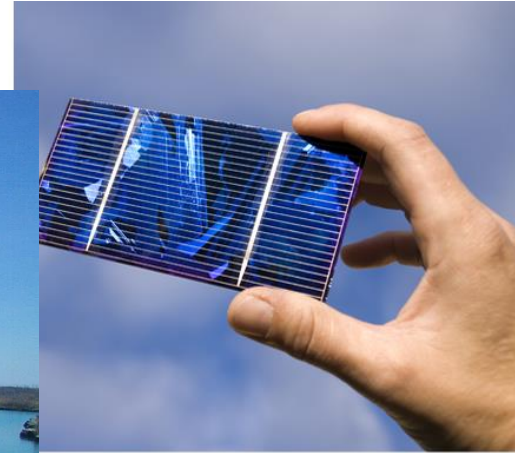


GSC RP 15 LP

FIT 5 Small Scale - Ground Mounted Solar Applications – Minto



GERMAN
SOLAR
CORPORATION

Standard Project Details

- I. All projects are located on abandoned CN railway corridors, and occupy less than 3 acres.
- II. One or two rows of panels, 12 feet above ground.
- III. Two row configuration is typically 350 metres long, Single row is 700 metres long
- IV. Weed control and Access for farm operations is maintained.
- V. Distribution line upgrades are required in most cases.



Standard Project Details



Typical Abandoned
Railway Corridor



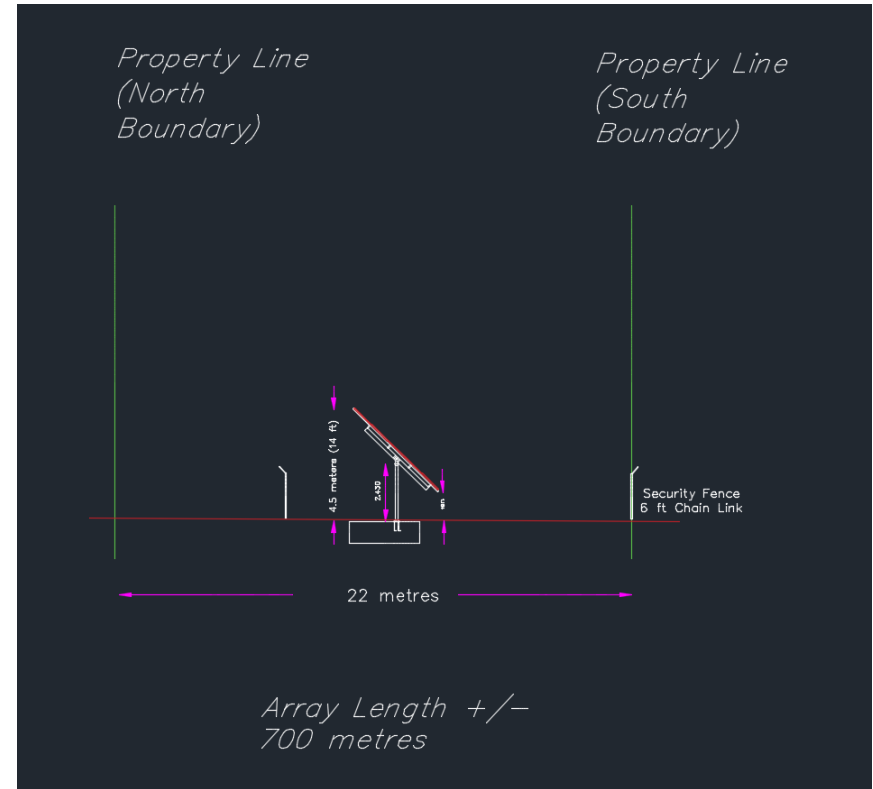
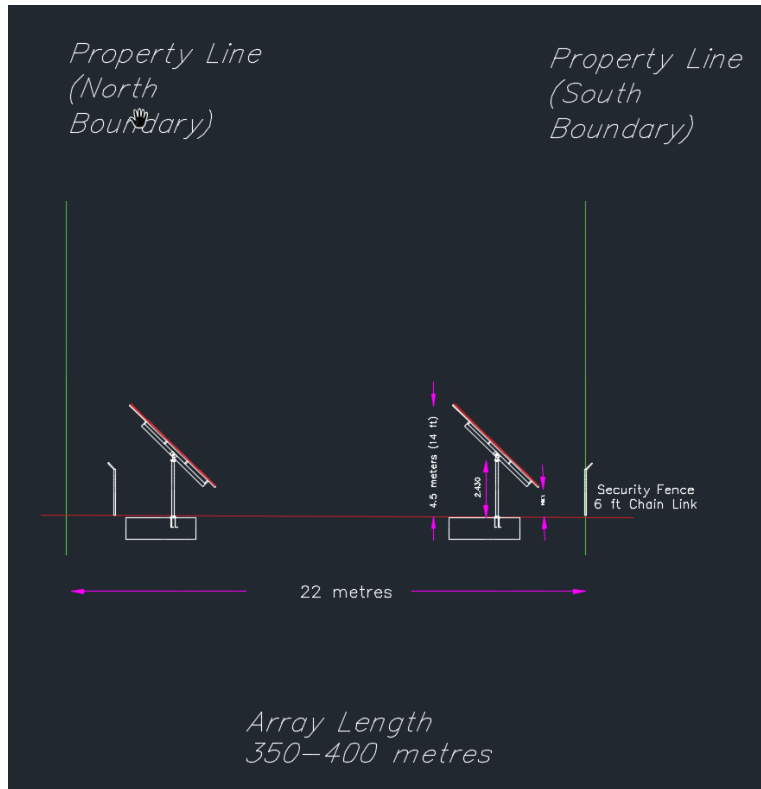
Double Row Configuration



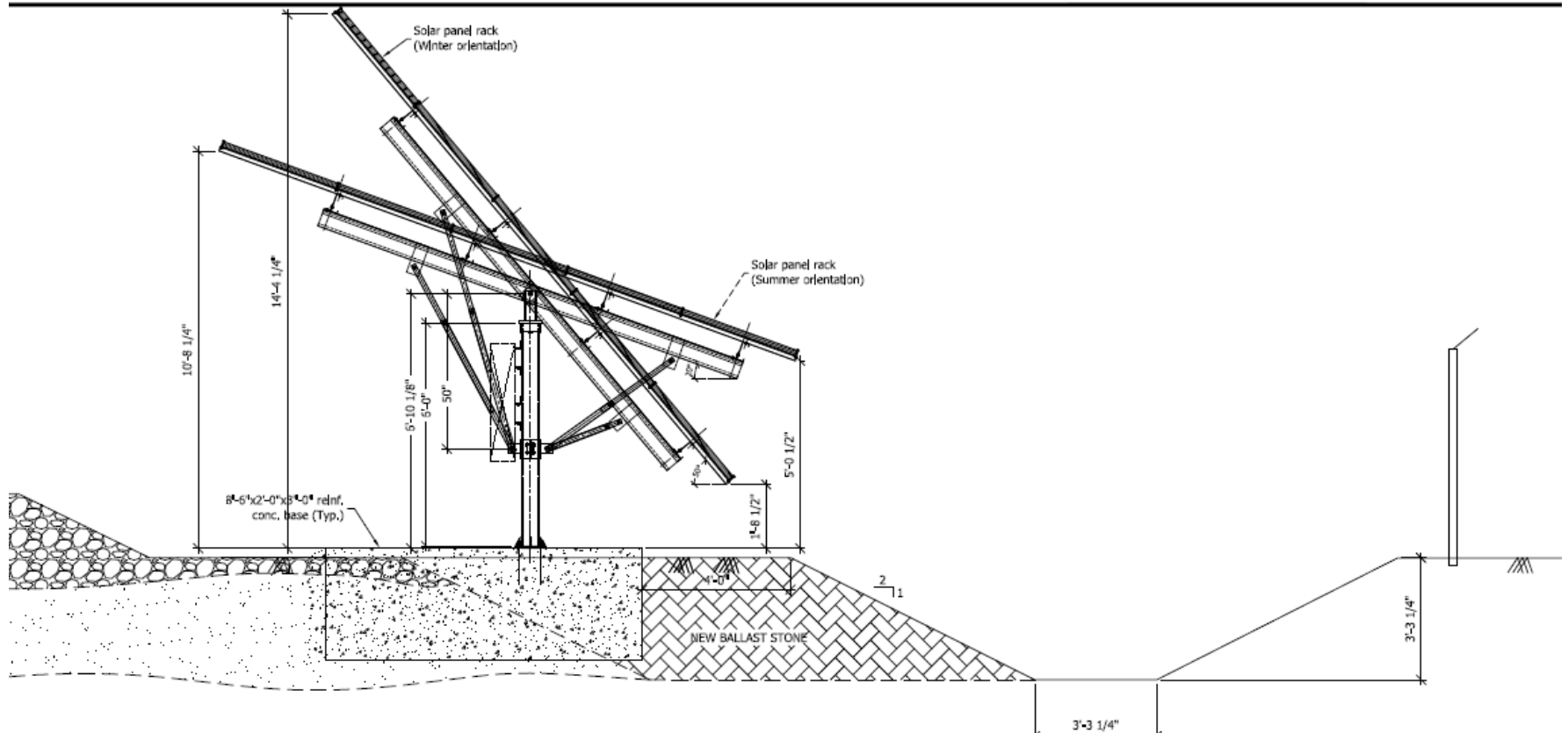
Single Row Configuration



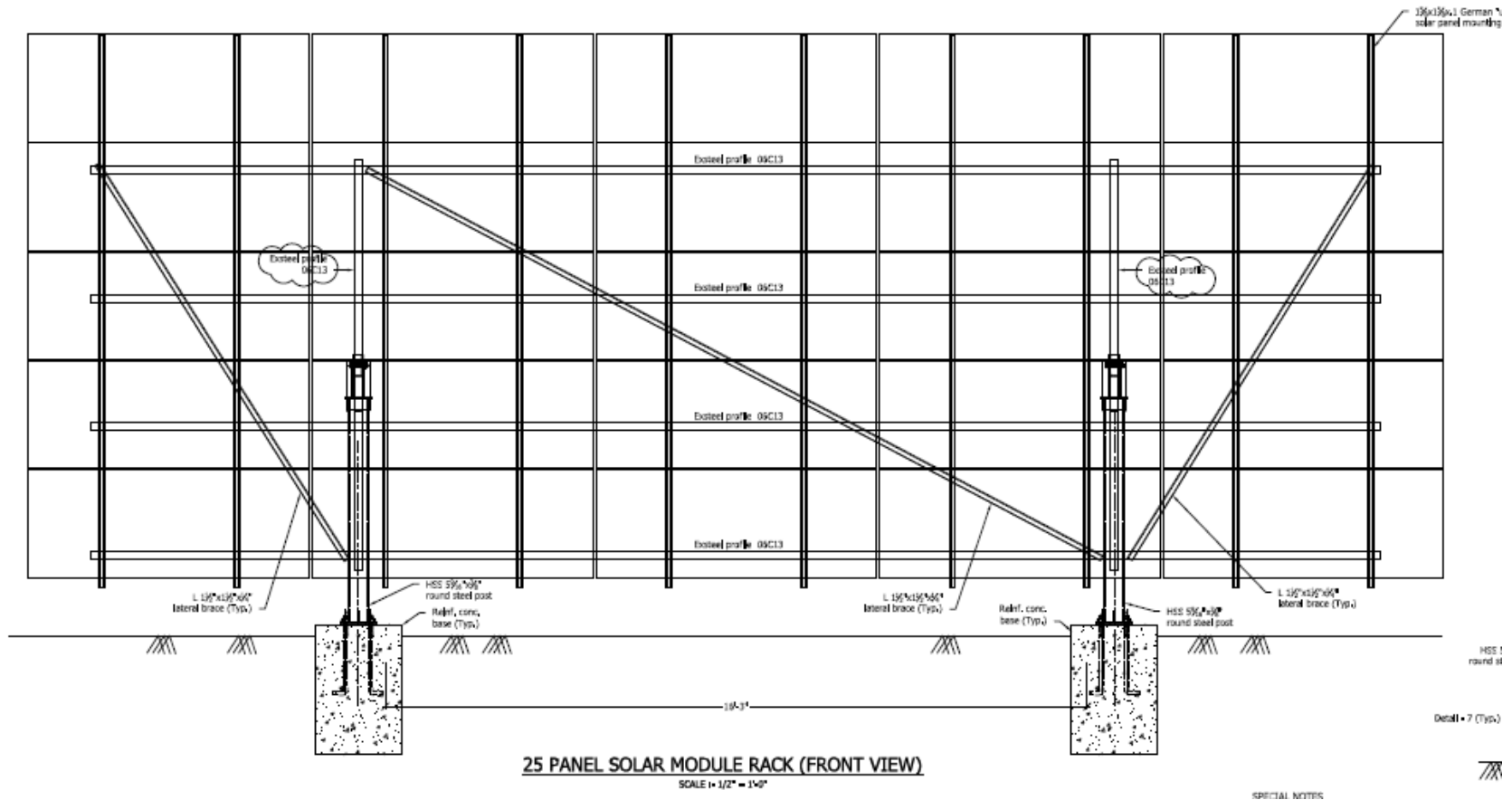
Project Details



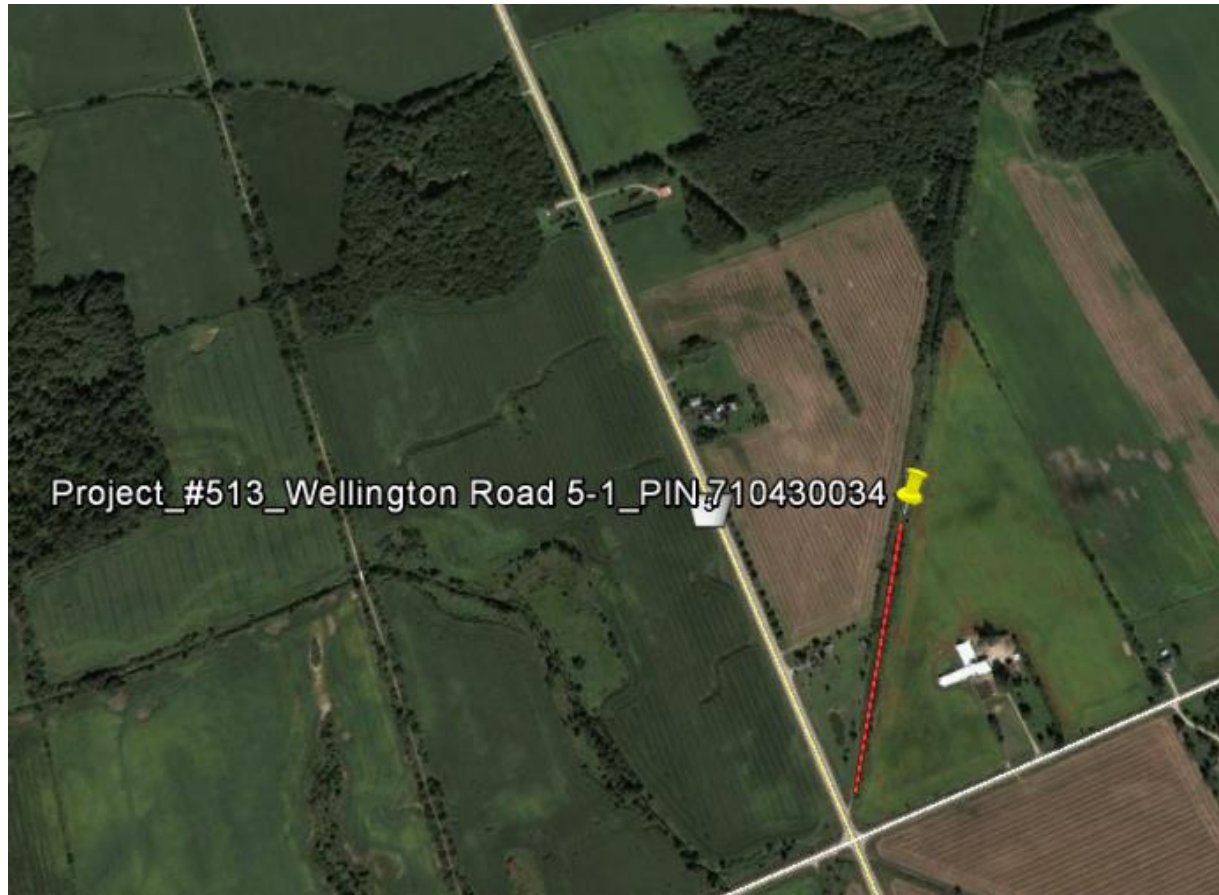
Project Details – Seasonal Tilt



Project Details – Seasonal Tilt



Proposed Project location and Extent – Project 513



GERMAN
SOLAR
CORPORATION

Proposed Project Location and Extent – Project 514



Proposed Project Location and Extent – Project 515



Proposed Project Location and Extent – Project 516



Proposed Project Location and Extent – Project 518



Contact

- German Solar Corporation
- Attn: Dennis L. German
 - 15835 Robins Hill Rd,
 - London Ontario.
 - N5V 0A5
- Ph: 519-457-7373



GERMAN
SOLAR
CORPORATION