

Agracan - LP

Palmerston Industrial Park Cannabis Cultivation Facility

Legislative Background

- ▶ Legal access to dried marijuana for medical purposes was first provided in 1999.
- ▶ In 2000 individuals with a medical need had the right to possess marijuana for medical purposes. This led to the implementation of the Marihuana Medical Access Regulations (MMAR) in 2001. The MMAR enabled individuals with the authorization of their health care practitioner to access dried marijuana for medical purposes by producing their own marijuana plants, designating someone to produce for them or purchasing Health Canada supply.
- ▶ Over time, court decisions resulted in a number of changes to the MMAR. In June 2013, the Government of Canada implemented the Marihuana for Medical Purposes Regulations (MMPR). The MMPR created conditions for a commercial industry responsible for the production and distribution of marijuana for medical purposes. Under the MMPR, individuals with a medical need could access quality-controlled dried marijuana produced under secure and sanitary conditions by an federally licensed producer.
- ▶ In 2017 the a comprehensive set of regulations called the Access to Cannabis for Medical Purposes Regulations ACMPR came into effect. In effect it combines the MMAR and MMPR into one set of guidelines.
- ▶ You can now grow your own supply or you can purchase from a licensed producer.

Cannabis

- ▶ Sativa
 - ▶ Energetic
 - ▶ Uplifting
 - ▶ Day-Time
- ▶ Indica
 - ▶ Sedative
 - ▶ Relaxation
 - ▶ Stress relief
 - ▶ Night-Time
- ▶ Ruderalis - Used for breeding auto-flowering strains
- ▶ Cannabinoids and Terpenes
 - ▶ Compounds secreted by cannabis
 - ▶ Terpenes are fragrant oils you can think of them as essential oils (Limonene, Humulene, Pinene)
 - ▶ Cannabinoids bind to receptors in the endocannabinoid system
 - ▶ They work together to assist our internal endocannabinoid system maintain or get back to our optimal operating range - (Metabolism, Stress Response, Immune Function etc.)
- ▶ Main Cannabinoids - THC and CBD
 - ▶ THC is the substance known to cause the psychoactive effects or the “high” felt from cannabis. THC is effective in Post-Traumatic Stress Disorder (PTSD), functions as an appetite stimulant for HIV/AIDS patients, reduces nausea and vomiting from cancer treatment, helps patients with insomnia, inflammation and pain.
 - ▶ CBD lacks nearly any psychoactive effect and is showing promise with epilepsy, including children with a severe form called Dravet’s Syndrome. CBD has also been used successfully by patients with genetic brain disorders, Crohn’s disease and ulcerative colitis, and Parkinson’s disease.

Medical use of Cannabis

1. Nausea and vomiting
2. Appetite stimulation
3. Pain relief
4. Multiple sclerosis
5. Epilepsy
6. Cancer
7. Anti-inflammatory
8. Post-traumatic stress disorder
9. Psychosis
10. Substance use disorders
11. Neuroprotection
12. Obesity
13. Glaucoma

Krosinski Enterprises Ltd. dba Agracan

1

Family owned
corporation
established in 2003

2

Industrial and
consumer goods
brokerage

3

Agracan is our
operating name in
the Cannabis
industry

4

Applied for a
Cannabis
distribution license
in 2013

5

Revised application
in April 2017 to a
cultivation license

Proposed Activities

Federally licensed Cannabis cultivation and processing facility

- Cultivation of Cannabis plants in greenhouse structures
- Processing of harvested Cannabis plants

Facility

- 5400 sqf processing building, 15,000 sqf greenhouse space to be expanded as business develops
- Purpose built processing and cultivation (greenhouses) - i.e.. Energy efficiency, odor mitigation, security
- High Security
 - Outside (un-classified):
 - 12 foot wire fence around the perimeter of the property
 - Entrance gate to the property
 - Multiple security 24/7 security cameras around outside of building structures - footage kept for a minimum 2 years
 - Flood lights around outside of building structures
 - Live monitoring
 - Inside (un-classified):
 - Live monitoring
 - Monitored intrusion, unauthorized access sensors
 - Internal video surveillance - footage kept for a minimum 2 years
 - Multi-step verification access control
 - Vault - Level (classified) Directive On Physical Security Requirements For Controlled Substances
 - Extensive standard operating procedures - Security
 - Crop profiling
 - Personnel (un-classified):
 - Police Record Check prior to employment commencement and periodic rechecks
 - RCMP security clearance to key position employees

Possible Community Concerns

► Crime

► Proliferation to community

- No direct retail outlet
- Secure production environment - employee diversion prevention in place
- Secure waste disposal system

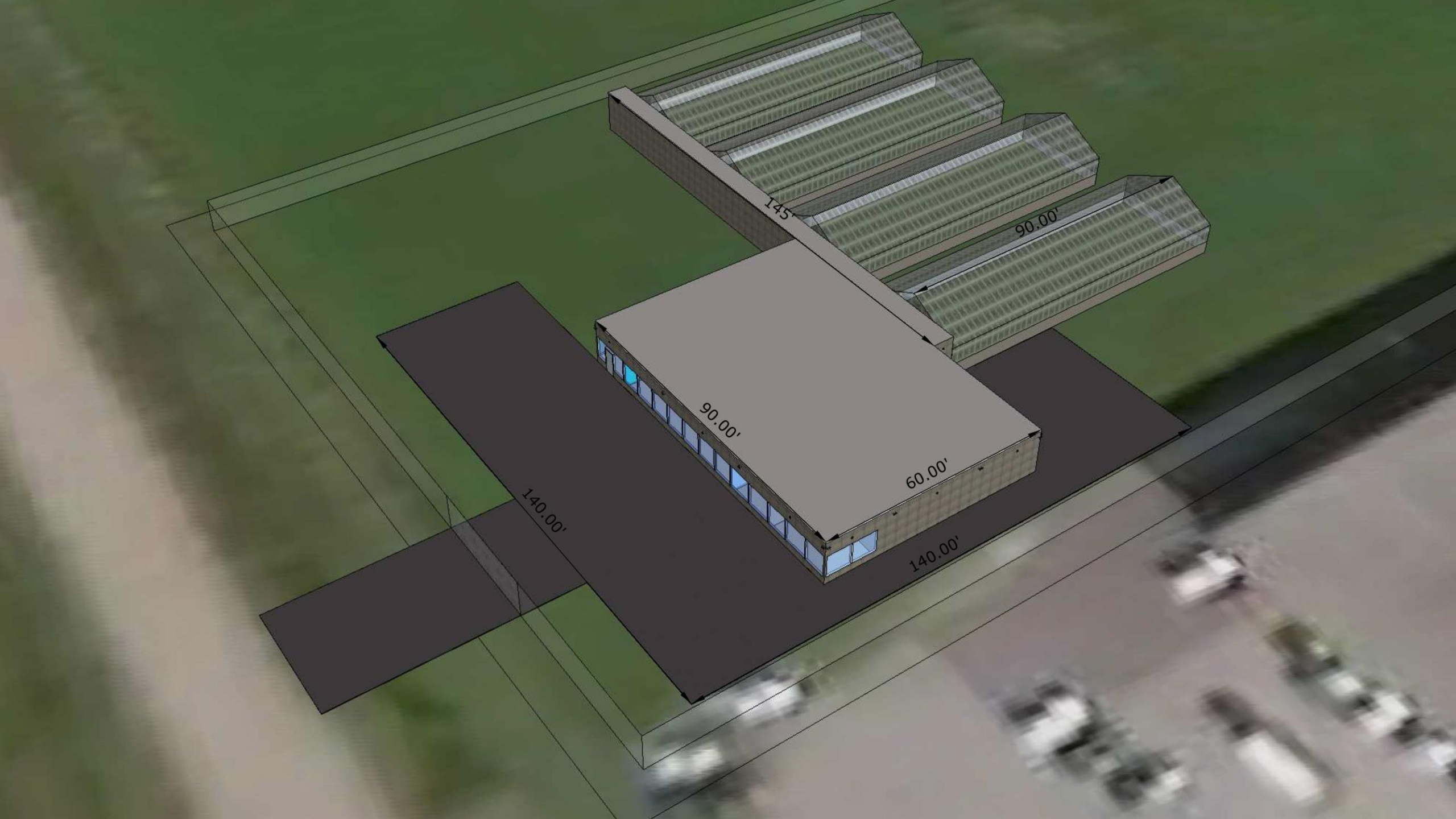
► Theft

- Extensive intrusion prevention systems
- Low value of product in comparison to other targets
- Product bulky
- Not worth a criminals time

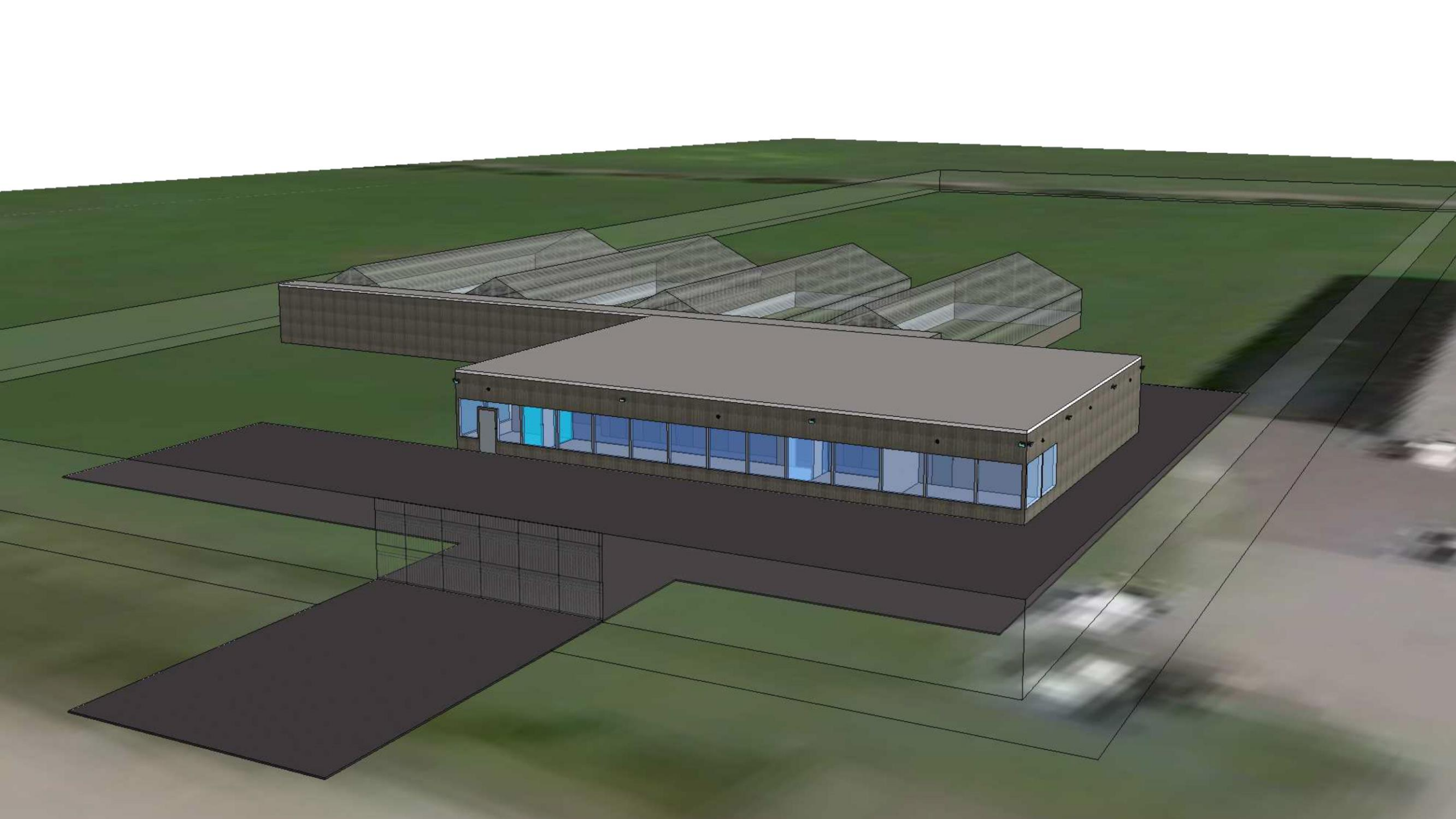
► No instance of criminal activity involving a licensed producer

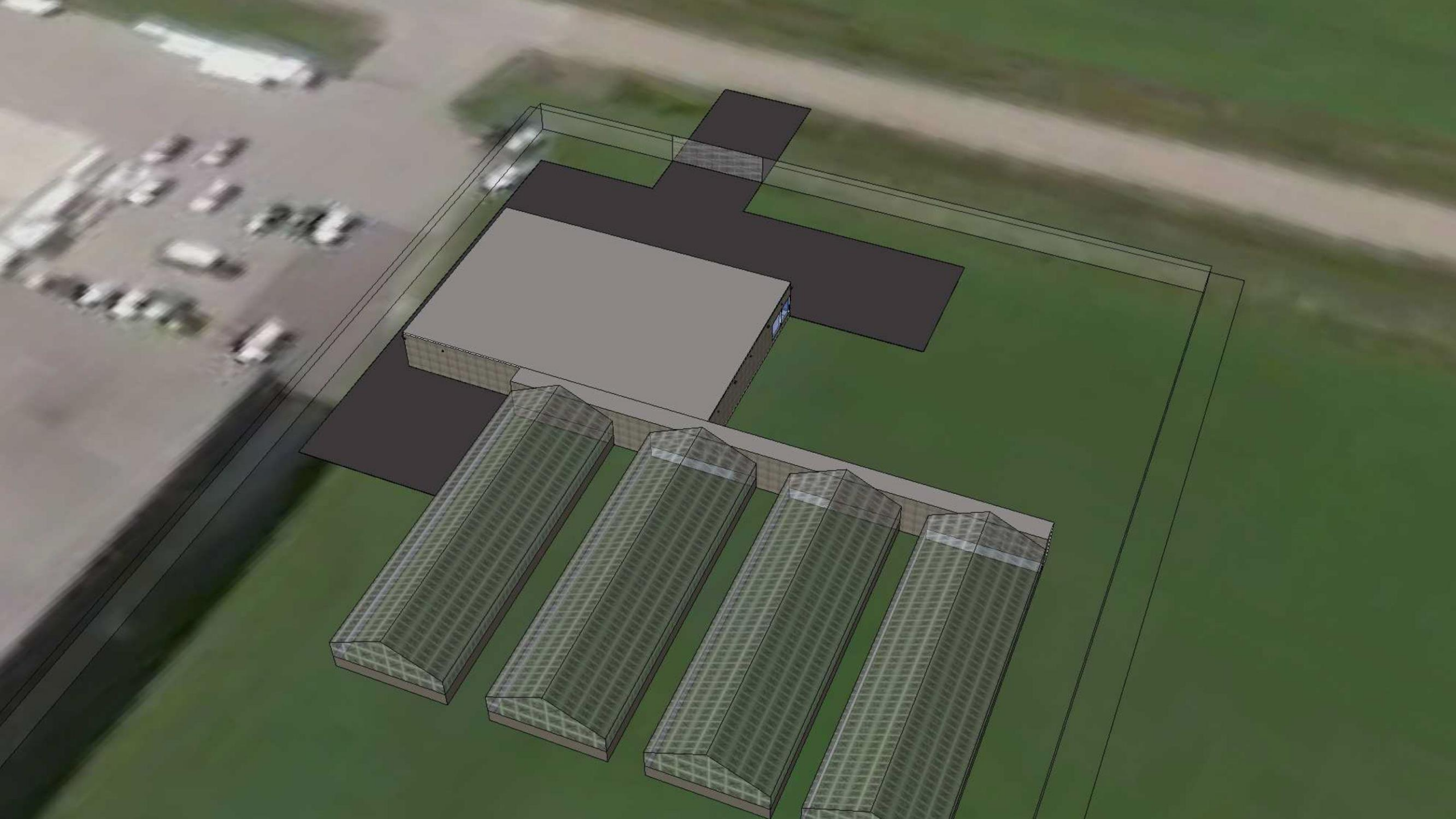
► Smell

- Legislated to have odor prevention mechanisms in place - Air filtration









Employment

- ▶ Only 2 prefilled positions in the company
- ▶ Openings
 - ▶ Horticulture
 - ▶ Sales
 - ▶ Administration
- ▶ Initial team of 8 at startup
- ▶ Expansion as production and sales ramp up
- ▶ Tweed - 120 people, Aphria - 110, Medreleaf 50

Community Benefits

- ▶ Increasing municipal tax base
- ▶ Making use of investment put into industrial park
- ▶ State of the art facility showing Minto open to innovative businesses
- ▶ Local employment opportunity
- ▶ Research opportunities that benefit everyone

The background features a series of overlapping, semi-transparent green triangles and polygons that create a dynamic, layered effect. The colors range from a light, pale green to a deep, forest green. The shapes are primarily oriented diagonally, with some pointing towards the top right and others towards the bottom left. The overall composition is modern and minimalist.

Thank You