



John Veit – Manager of Plant Operations
Upper Grand District School Board
500 Victoria Road North,
Guelph, ON, N1E 6K2

August 28, 2017

Town of Minto
Public Works Department
5941 Highway #89
Harriston, ON N0G 1Z0

Re: Municipal Curb Painting for Visual Needs Student

To Whom It May Concern,

Norwell DSS (135 Cumberland St, Palmerston, ON N0G 2P0) currently has a student with blind/low vision accommodation needs. In consultation with the student, special education consultants, and Itinerant Vision Teacher, several recommendations for upgrades have been identified inside and outside the school to ensure safety, independence, and accessibility for our student. All recommendations on our property have been addressed.

An outstanding recommendation is to paint a 4" yellow line along the top concrete curb around the school. This line provides a strong visual clue for the student while walking and waiting for their school bus. The line would be similar to parking lot lines.

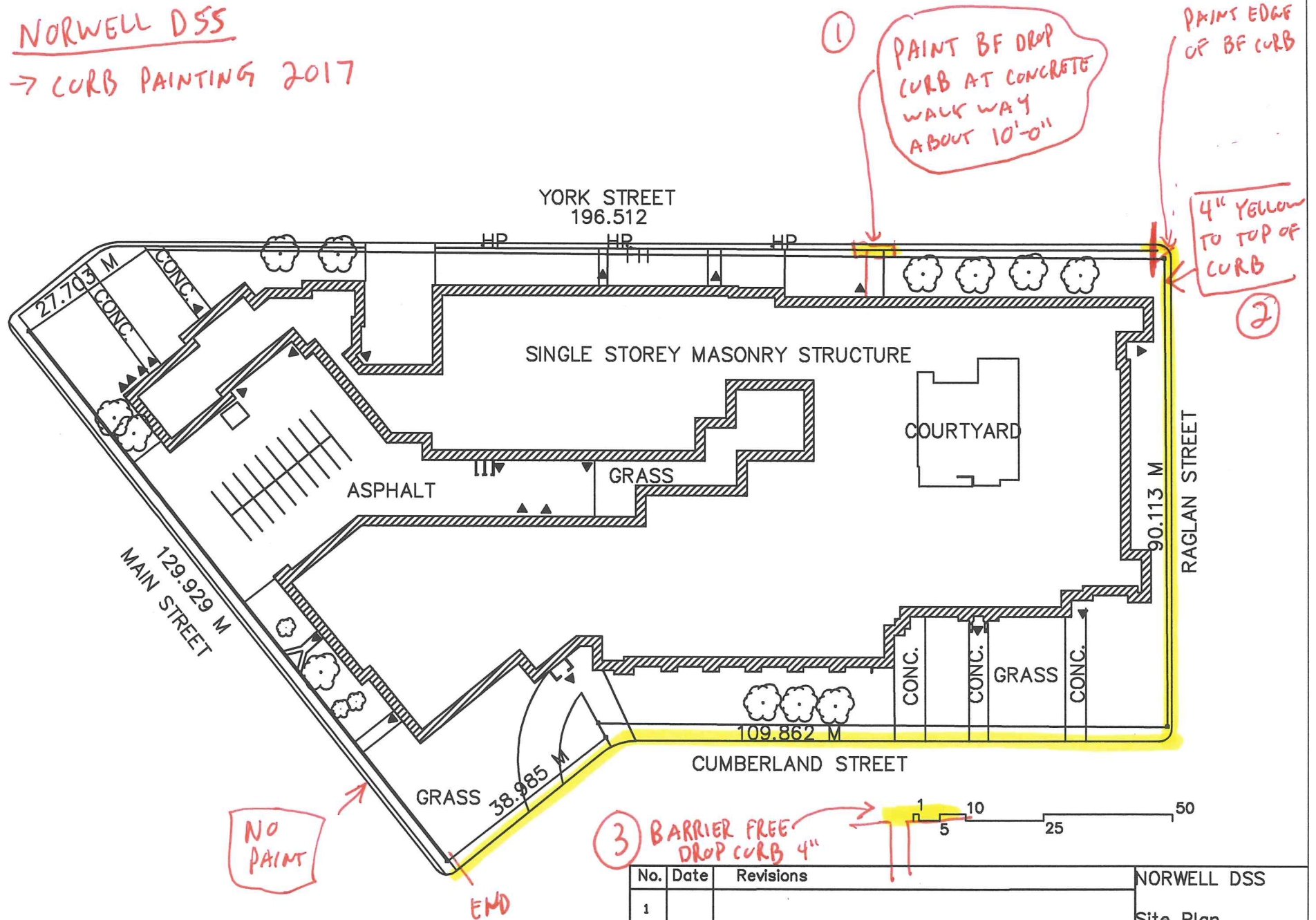
Modifications to Municipal Property require approval from the Town of Minto. We are requesting permission to install this traffic paint in order to support our student. See attached sketch

Sincerely,

John Veit
Manager of Plant Operations
JV / jh

NORWELL DSS

→ CURB PAINTING 2017



No.	Date	Revisions	NORWELL DSS
1			Site Plan 135 Cumberland St Palmerston JUNE 20, 2008