



Hilton Landmarks Design Options

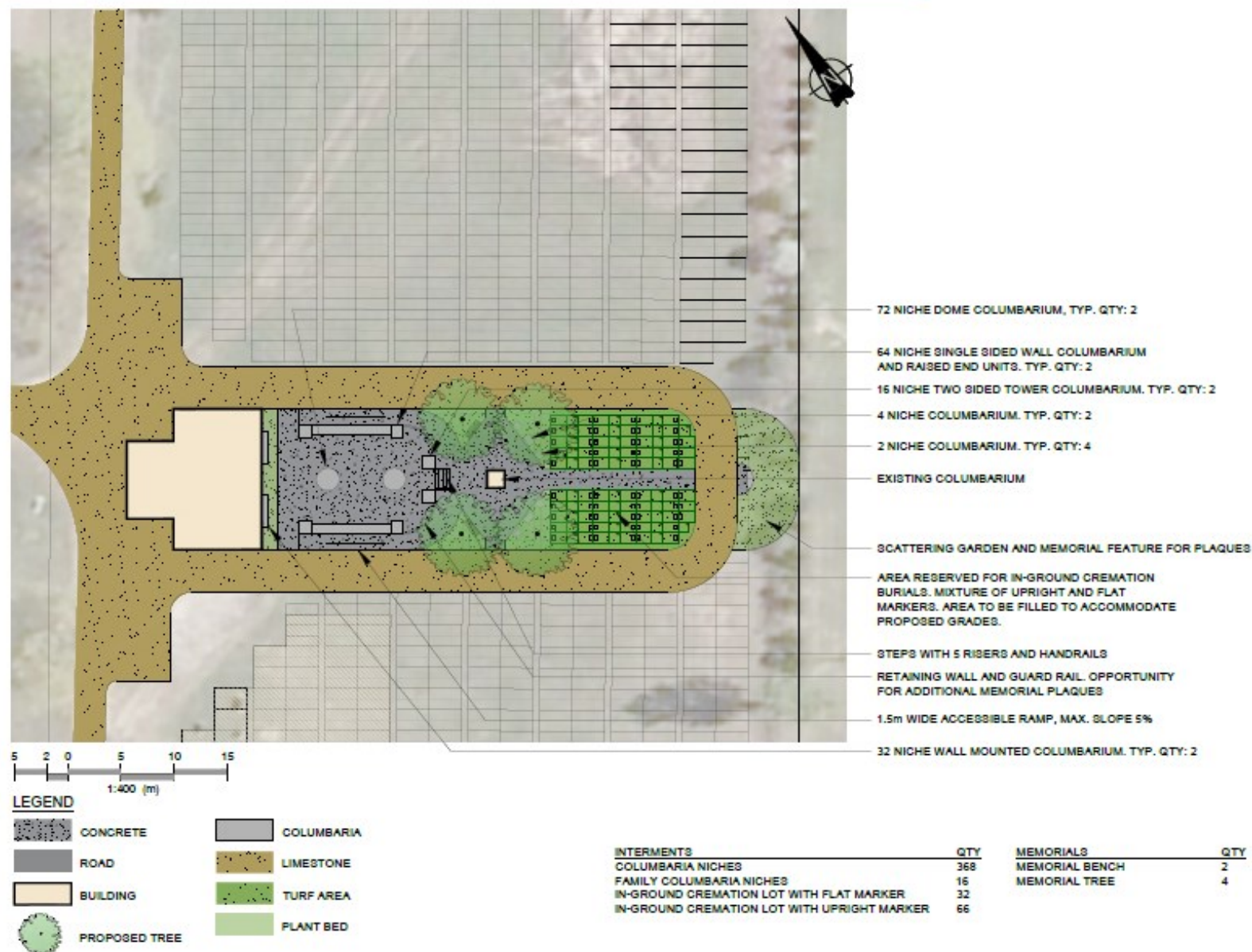
Interring Cremated Remains

Clifford, Harriston, Palmerston Cemeteries

Council Direction

- 2018 Capital Budget \$55,000 for cremation options in Minto cemeteries
- May 22 Council discusses cemetery maintenance issues raised by members of the public
- June 19 Council receives 1st draft Cemetery Master Plan proposes summer document review and public meeting this fall
- July 3 Council awards design work to Hilton Landmarks
- July 5 Initial Staff Meeting with Corey Blanquiere of Hilton Landmarks
- August 23 design options Clifford, Harriston, Palmerston site received for staff review
- September 17 meeting reviewing options

TOWN OF MINTO - CREMATION GARDEN CONCEPTS



TOWN OF MINTO - CREMATION GARDEN CONCEPTS



COLUMBARIUM AT RETAINING WALL AND RAMP



CURVED COLUMBARIUM WITH RAISED END UNITS



DOME COLUMBARIUM



MEMORIAL PLAQUES AT RETAINING WALL



TOWER COLUMBARIA AND WALL
COLUMBARIA AT RETAINING WALL

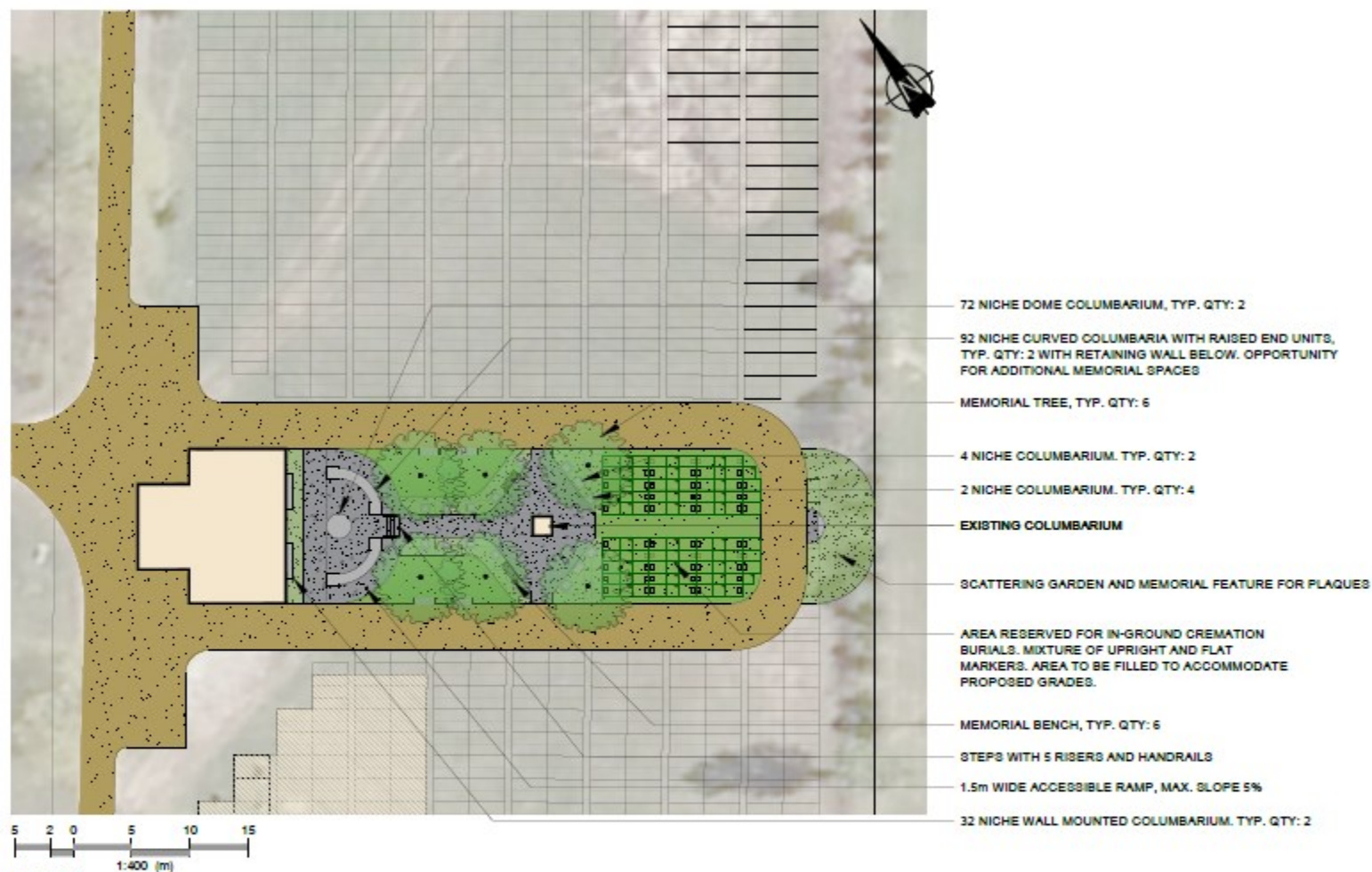


SCATTERING GARDEN MEMORIAL FEATURE



SCATTERING GARDEN MEMORIAL FEATURE

TOWN OF MINTO - CREMATION GARDEN CONCEPTS

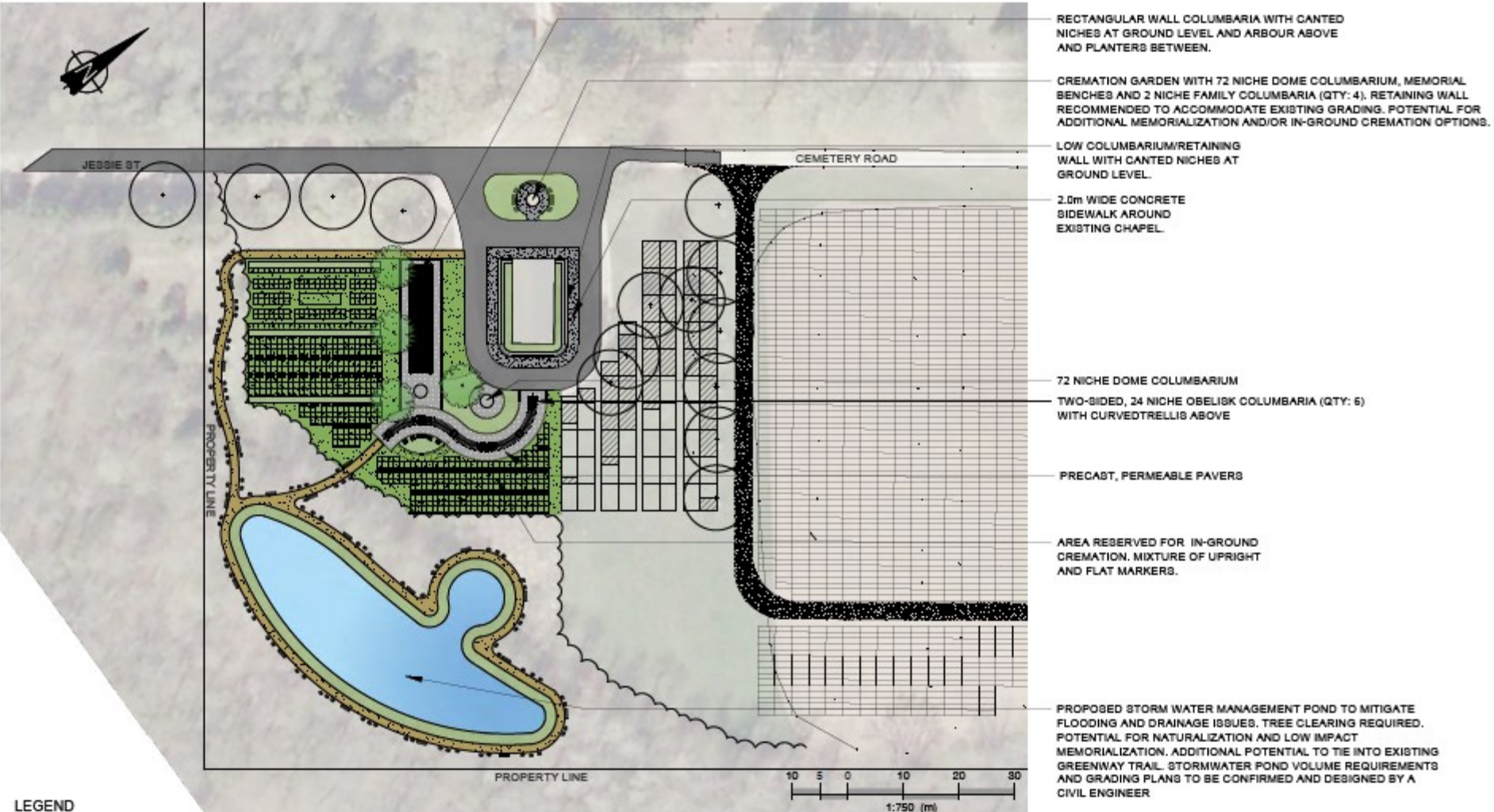


LEGEND

	CONCRETE		COLUMBARIA
	ROAD		LIMESTONE
	BUILDING		TURF AREA
	PROPOSED TREE		PLANT BED

INTERMENTS	QTY	MEMORIALS	QTY
COLUMBARIA NICHES	352	MEMORIAL BENCH	6
FAMILY COLUMBARIA NICHES	88	MEMORIAL TREE	6
IN-GROUND CREMATION LOT WITH FLAT MARKER	32		
IN-GROUND CREMATION LOT WITH UPRIGHT MARKER	66		
SCATTERINGS			

TOWN OF MINTO - CREMATION GARDEN CONCEPTS



LEGEND

	CONCRETE		COLUMBARIA		SWM POND WATER
	ROAD		LIMESTONE		PROPOSED TREE
	PRECAST PAVERS		TURF AREA		EXISTING TREE TO REMAIN
	BUILDING		PLANT BED		

INTERMENTS	
COLUMBARIA NICHES	864
FAMILY COLUMBARIA NICHES	16
IN-GROUND CREMATION LOT WITH FLAT MARKER	147
IN-GROUND CREMATION LOT WITH UPRIGHT MARKER	323
MEMORY STONES	96

MEMORIALS	
MEMORIAL BENCH	24
MEMORIAL TREE	4

TOWN OF MINTO - CREMATION GARDEN CONCEPTS



DOME COLUMBARIUM



CURVED COLUMBARIA WITH CANTED NICHES



COLUMBARIUM RETAINING WALL



LOW IMPACT MEMORIALIZATION



SWM POND WITH MEMORY STONES



TOWER COLUMBARIA



TOWER COLUMBARIA WITH ARBOUR ABOVE

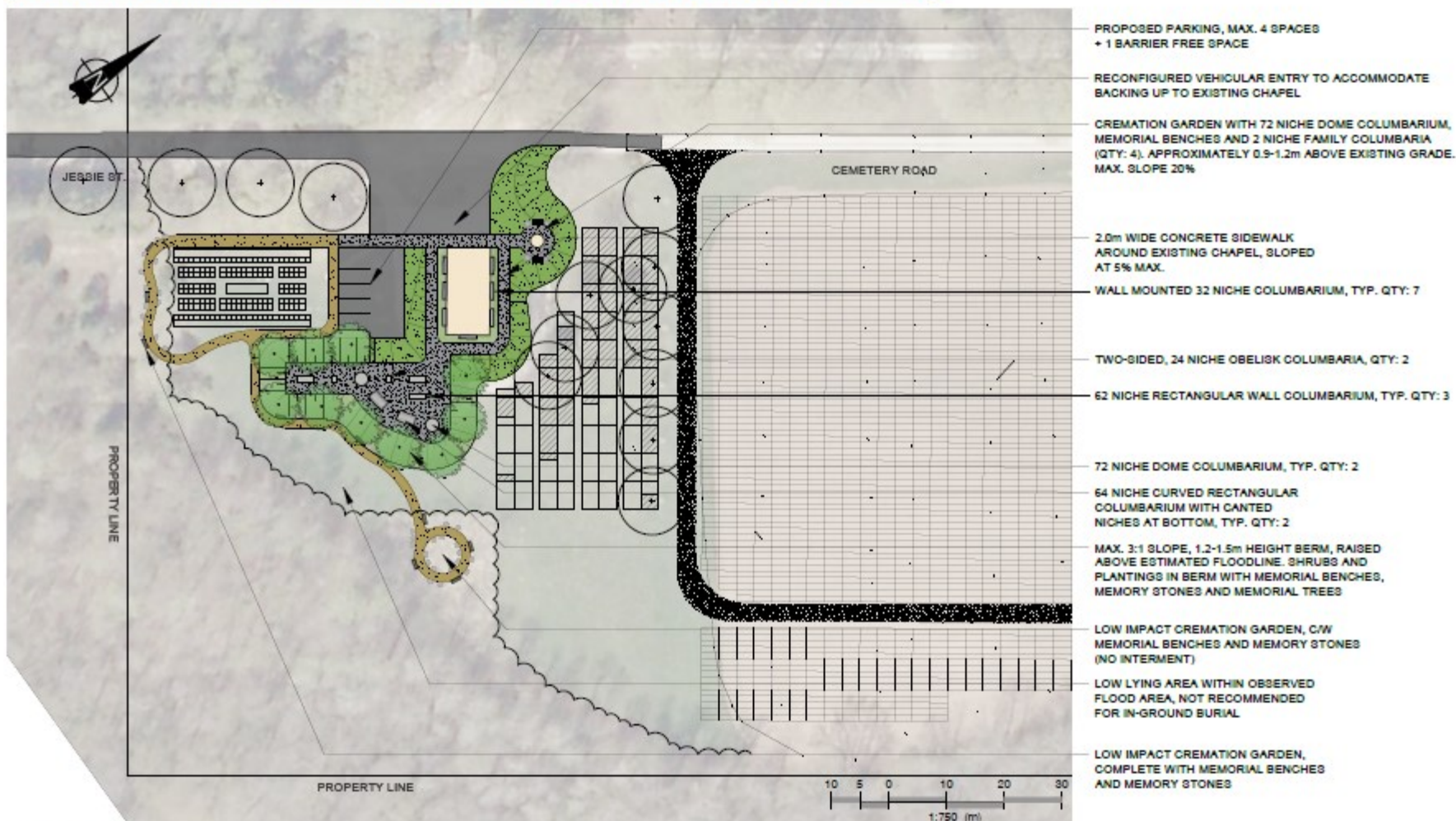


WALL MOUNTED COLUMBARIUM

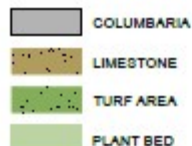
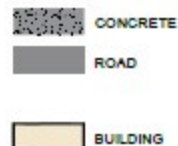


2 NICHE COLUMBARIUM

TOWN OF MINTO - CREMATION GARDEN CONCEPTS



LEGEND



INTERMENTS

COLUMBARIA NICHEs
FAMILY COLUMBARIA NICHEs

QTY

752
8

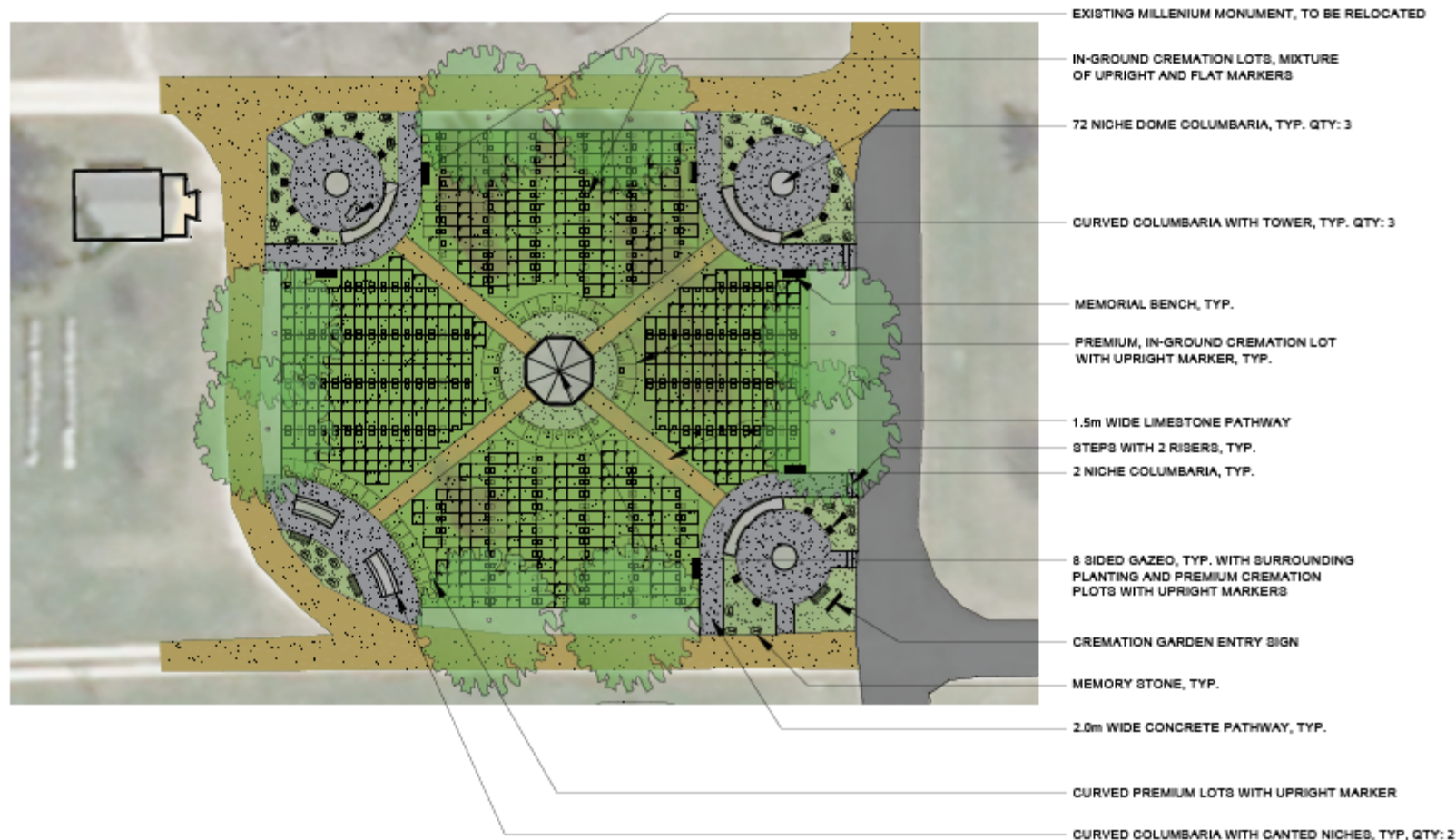
MEMORIALS

MEMORIAL BENCH
MEMORIAL TREE
MEMORY STONES

QTY

11
10
47

TOWN OF MINTO - CREMATION GARDEN CONCEPTS



LEGEND

	CONCRETE
	ROAD
	BUILDING
	COLUMBARIA

	LIMESTONE
	TURF AREA
	PLANT BED
	PROPOSED TREE
	EXISTING TREE TO REMAIN

INTERMENTS	QTY
COLUMBARIA NICHERS	752
FAMILY COLUMBARIA NICHERS	32
IN-GROUND CREMATION LOT WITH FLAT MARKER	279
IN-GROUND CREMATION LOT WITH UPRIGHT MARKER	480
PREMIUM IN-GROUND CREMATION LOT	40
MEMORY STONES	27

MEMORIALS	QTY
MEMORIAL BENCH	9
MEMORIAL TREE	8



TOWN OF MINTO - CREMATION GARDEN CONCEPTS



CURVED COLUMBARIA WITH CANTED NICHEs



CURVED COLUMBARIUM WITH RAISED END UNITS



DOME COLUMBARIUM



CREMATION GARDEN ENTRY SIGNAGE



GAZEBO FEATURE



RECTANGULAR COLUMBARIUM WITH RAISED ENDS



RECTANGULAR COLUMBARIUM

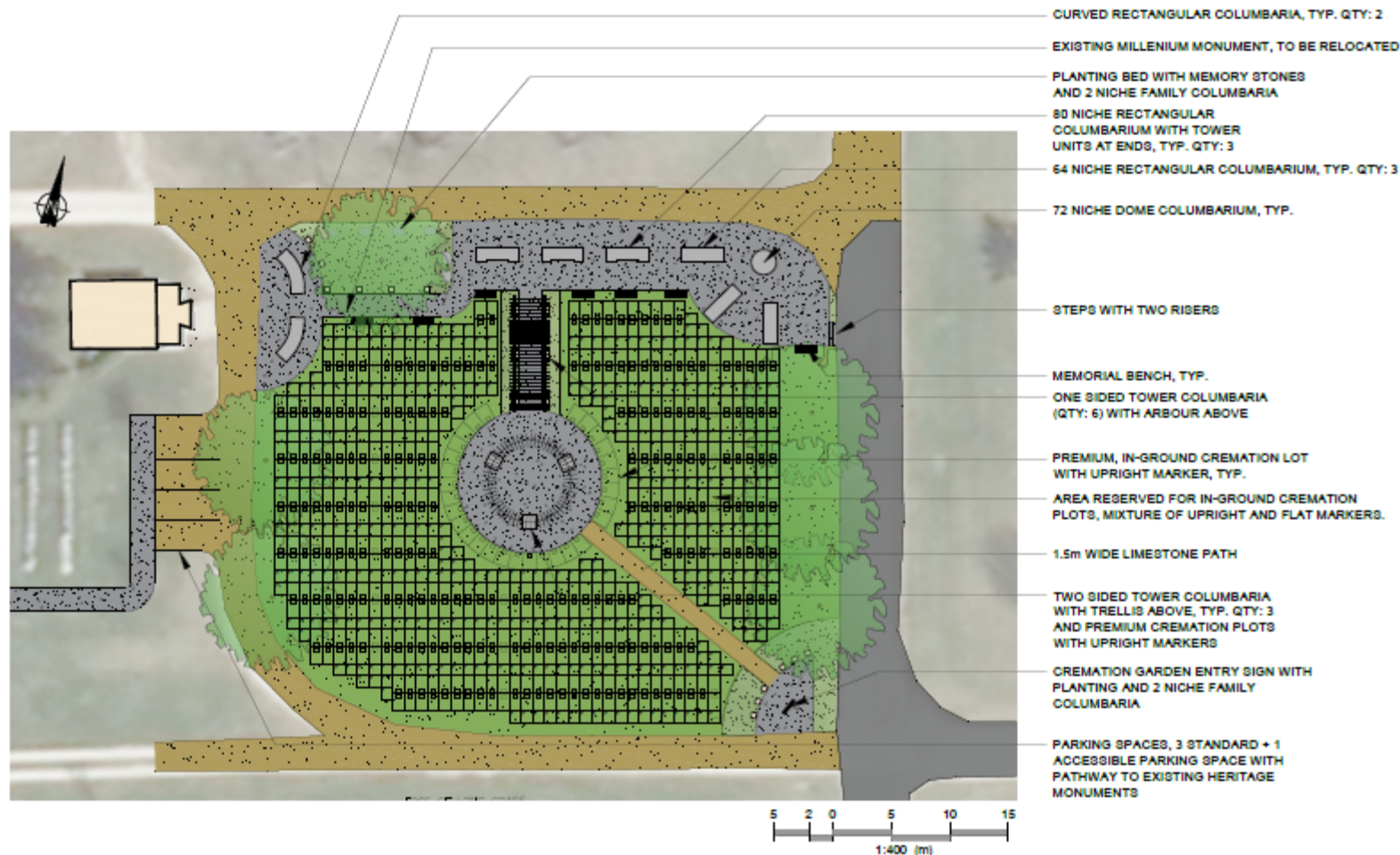


TOWER COLUMBARIUM WITH ARBOUR ABOVE
AND CURVED COLUMBARIUM



2 NICHE COLUMBARIUM

TOWN OF MINTO - CREMATION GARDEN CONCEPTS



Cost and Phasing

- Depending on option total cost to do all installation in three cemeteries +-\$2 million for +-3300 niches which could provide for over 6,000 interments
- Quality installations last 50 to 100 years or more with proper maintenance
- Work can be phased into many different sections in each cemetery over several years
- Seek out public comments in fall public meetings late October early November
- Full day of public open houses with Hilton Landmarks designer to obtain feedback in Palmerston, Clifford and Harriston 10am - noon; 1pm - 3pm 3:30pm - 5:30pm



Cemetery Master Plan

- Sending to area Funeral Home Operators along with preferred design for review and comment
- Receive public comment on design options this fall and on Draft Cemetery Master Plan
- Consolidate all comments into Final Cemetery Master Plan for presentation to next Council for budget allocation in 2019 and beyond
- Cremation design options fits with Master Plan Action #20 to establish a benevolence program to help fund “new columbarium, niches or other features, chapel upgrades or similar improvements”

Recommendation

That Council receive the presentation from the CAO Clerk and Roads & Drainage Manager regarding Hilton Landmarks Design Options; Interring Cremated Remains Clifford, Harriston, Palmerston Cemeteries, and that Council direct staff to proceed to public comment on the proposed designs presented.





Hilton Landmarks Design Options

Questions?

